

2017 Annual Report

Our work in 2017 continued to demonstrate an unwavering commitment to coverage and care for Massachusetts residents, while pursuing policy and system delivery solutions to behavioral health access and social factors affecting health.

Skip to:

[Message](#)

[Areas of Focus](#)

[Grantmaking](#)

[Policy & Research](#)

[Convenings](#)

[Programs](#)

[Financials](#)

[Board List](#)

Message From the President & Chairman

We are pleased to share with you our 2017 Annual Report following a year that demanded steady attention to the federal landscape and allowed us to continue to contribute to the understanding of statewide programs and policies.

We were proud to release a [groundbreaking analysis](#) of the Community Support Program for People Experiencing Chronic Homelessness (CSPECH), which quantifiably demonstrated the return on investment that this innovative program delivers. We issued timely briefs on the impact of proposed federal action or inaction—such as [caps on state Medicaid funding](#), the [American Health Care Act](#), and [Children's Health Insurance Program \(CHIP\) reauthorization](#)—that equipped Massachusetts leaders to advocate and respond.

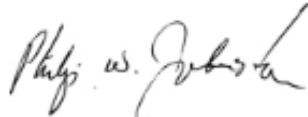
We deepened our connections to stakeholders in mental health and substance use and advanced our related policy and research agenda on the [behavioral health system](#). Our 2017 investments in [social equity and health](#) focused on supporting new partners with the tools they need to address housing and food insecurity.

As we dive into the issues of 2018, we promise to keep you informed and prepared for the important challenges and opportunities that are inevitable in this time of uncertainty and rapid innovation. We hope you will join us in ensuring the preservation of our hard fought gains in coverage, testing promising models that enhance access to behavioral health services, and identifying new ways of successfully working across sectors to address the social determinants of health.

Sincerely,



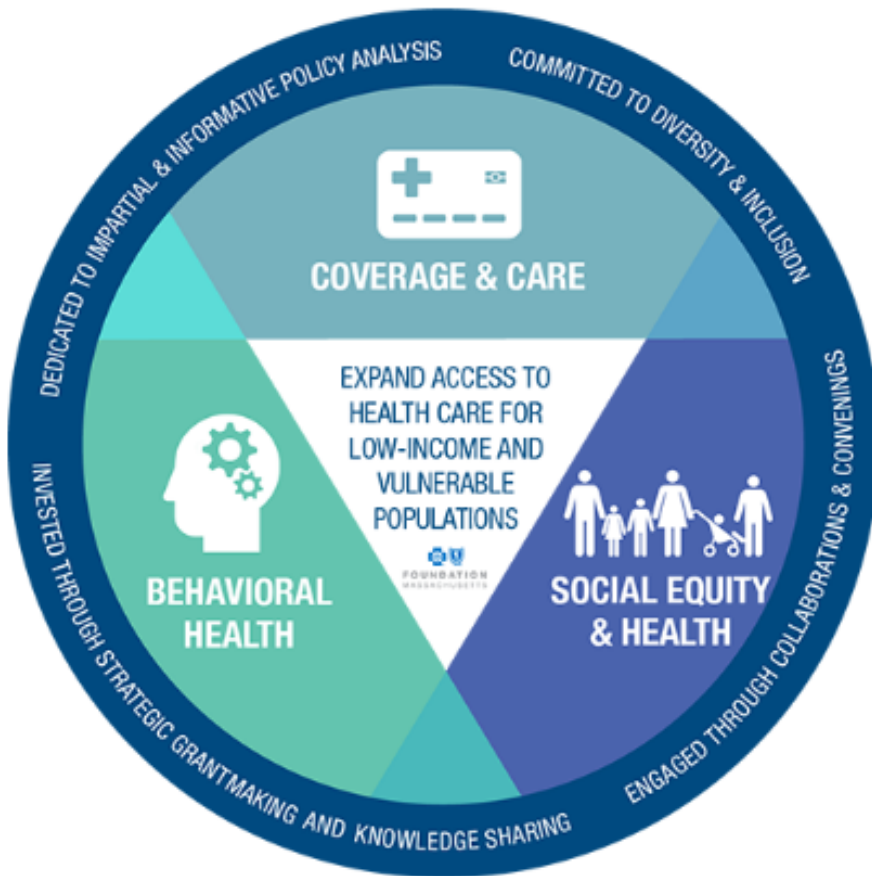
Audrey Shelto
President



Phil Johnston
Chair

2017 Areas of Focus

Everyone should have access to quality, affordable health care. Insurance coverage is necessary, but not sufficient to guarantee adequate access or improved health. **We must ensure that people have a basic understanding of how to use and keep their coverage** so they can access the full array of services they need, especially treatment for mental health and substance use disorders. And, **we need to continue to promote the idea that factors beyond medical care**, including the availability of quality food and housing, are important to overall health.



[View our 2017-2020 Strategic Areas of Focus »](#)

Grantmaking

We organize our funding priorities into defined programs that are closely tied to our mission and areas of focus.

We fund programs and projects that promote sustainable improvements in health care access for low-income and vulnerable people. Through our grantmaking, we also identify trends that inform our policy work and bring to scale best practices and lessons learned. Current funding priorities include integrating behavioral health care and primary care, connecting low-income consumers with coverage and care, strengthening advocacy for health access, and examining the impact that social service spending can have on health outcomes and costs.

Grantmaking

We organize our funding priorities into defined programs that are closely tied to our mission and areas of focus.

We fund programs and projects that promote sustainable improvements in health care access for low-income and vulnerable people. Through our grantmaking, we also identify trends that inform our policy work and bring to scale best practices and lessons learned. Current funding priorities include integrating behavioral health care and primary care, connecting low-income consumers with coverage and care, strengthening advocacy for health access, and examining the impact that social service spending can have on health outcomes and costs.



- \$1.25M** Fostering Effective Integration
- \$745K** Strengthening the Voice for Access
- \$600K** Connecting Consumers with Care
- \$325K** Social Equity and Health
- \$380K** Special Initiatives
- \$50K** Policy and Research Grants
- \$122K** Catalyst Fund



Vinfen is a grantee under the *Fostering Effective Integration of Behavioral Health and Primary Care* grant area.

Policy & Research

The focus of our policy and research projects is the development of effective policy solutions through impartial and timely research and analysis.

Our work centers on access and affordability as well as how barriers to care—whether regulatory, financial, or other – seriously impact people's health outcomes, especially among low-income and vulnerable populations. Working with nationally recognized researchers and academics, we focus on projects that identify effective solutions to local and national health care issues. Our publications are widely regarded as key resources for policymakers and those interested in Massachusetts health care issues.



[REVISED - Integrating MassHealth Long-Term Services and Supports: Considerations for ACOs and MCOs](#)

[Chapter 224 Tracking Tool, Updated November 2017](#)

[Access to Outpatient Mental Health Services in Massachusetts](#)

[CHIP Reauthorization Update: Congressional Inaction Puts States in Limbo](#)

[UPDATED MassHealth: The Basics \(September 2017\)](#)

[Access to Behavioral Health Care in Massachusetts: The Basics](#)

[Overview of the Senate Better Care Reconciliation Act of 2017](#)

[The Importance of CHIP Reauthorization for Massachusetts](#)

[A Guidebook to Social Services for MassHealth ACOs](#)

[MassHealth: The Basics – Enrollment Update \(March 2017\)](#)

[Modeling the Impacts of the American Health Care Act on Massachusetts](#)

[The Geography of Uninsurance in Massachusetts, 2011-2015](#)

[Proposals to Cap State Medicaid Funding: Massachusetts Considerations](#)

[Estimating Cost Reductions Associated with the Community Support Program for People Experiencing Chronic Homelessness](#)

[The MassHealth Waiver 2016–2022: Delivering Reform](#)

Convenings

We bring awareness of important health care issues to people across the Commonwealth through collaborations, convenings, media, and publications.

We are proud of our ongoing role as an impartial convener of thoughtful public discussion. The Foundation team is widely recognized for their expertise in many aspects of health care and are often called upon to serve on committees and task forces around the state. Foundation-sponsored conferences assemble stakeholders from government, advocacy, academia, and the provider community to discuss timely health care issues. Much of our work is covered by local and industry media and we also proactively seek opportunities to make health care policy more accessible through guest columns and presentations.



282

MEDIA RESULTS



106,227

WEB PAGE VIEWS



21,858

DOWNLOADS



**11
CONVENINGS
& WEBINARS**



**5
LEARNING
COMMUNITIES**

Programs

The Foundation runs three programs directly related to our mission of expanding access to health care.

The Massachusetts Medicaid Policy Institute produces independent, nonpartisan research and analysis about MassHealth, expanding understanding of this important coverage program and broadening the dialogue about ways to improve its effectiveness. The Massachusetts Institute for Community Health Leadership develops and nurtures emerging health care leaders. The Health Coverage Fellowship expands the capacity of the media to cover issues related to health reform and access to care.



The Massachusetts Medicaid Policy Institute (MMPI) is a full-time policy program of the Foundation, devoted to **broadening the understanding** of the Massachusetts Medicaid program, MassHealth. MMPI promotes the discussion of effective policy solutions through educational materials and **in-depth policy papers**, and hosting **convenings and webinars** attracting a wide range of stakeholders.



18 Day Program



16 Participants

Resulting in the Next Generation of Community Health Leaders



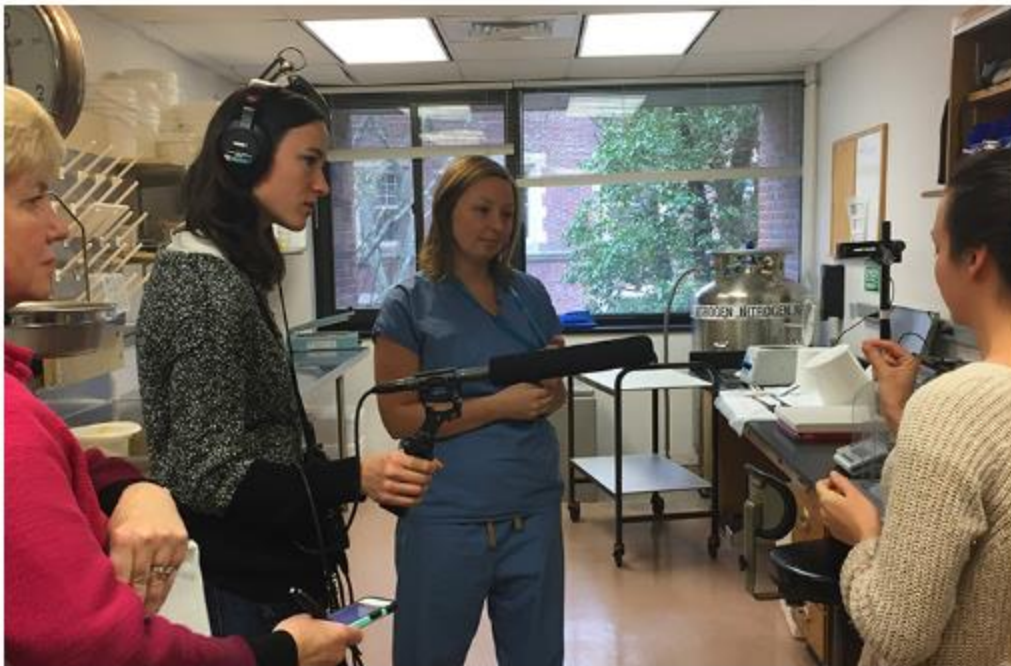
12 Journalists



83 Speakers



42 News Stories



Journalists in the 2017 *Health Coverage Fellowship* hear from researchers at the McLean Hospital Brain Bank.



**Blue Cross Blue Shield of Massachusetts Foundation
Board of Directors Officers
2017**

Andrew Dreyfus

Blue Cross Blue Shield of Massachusetts, President and Chief Executive Officer

Matthew Fishman

Partners HealthCare, Vice President for Community Health

Thea James

Boston Medical Center, Physician, Emergency Medicine: Vice President of Mission & Associate Chief Medical Officer

Philip Johnston

Philip W. Johnston Associates, President & Chief Executive Officer

Mary Kay Leonard

Self Employed, Consultant

Manny Lopes

East Boston Neighborhood Health Center, President & CEO

Richard Lord

Associated Industries of Massachusetts, President and Chief Executive Officer

Antonia (Toni) McGuire

Edward M. Kennedy Community Health Center, President & Chief Executive Officer

Robert Meenan

Mary Christie Foundation, President

Bruce Nash

Blue Cross Blue Shield of Massachusetts, Inc., Chief Physician Executive

Robert Restuccia

Community Catalyst, Executive Director

Henry Thomas

Urban League of Springfield, Inc., President & CEO

Patricia Washington

Board advisor

Blue Cross Blue Shield of Massachusetts Foundation, Inc.
for Expanding Healthcare Access

Statements of Activities and Changes in Net Assets
(Dollars in Thousands)

	Year Ended December 31	
	2017	2016
Revenues and other support:		
Contributions	\$ 281	\$ 247
Contributions in-kind	858	945
Investment income	2,580	1,362
Net unrealized and realized gains (losses) on investments	12,606	5,625
Total net revenues and other support	16,325	8,179
Expenses:		
Grants	3,487	3,822
Professional services	1,628	1,880
Salaries and benefits	1,962	2,046
Conferences, conventions, and meetings	263	268
Occupancy and equipment maintenance	119	137
Federal excise tax (benefit) expense	(88)	107
Other administrative expenses	44	67
Total expenses	7,415	8,327
Excess (deficit) of revenues and other support over expenses and change in net assets	8,910	(148)
Net assets at the beginning of year	100,358	100,506
Net assets at the end of year	\$ 109,268	\$ 100,358

See accompanying notes.