

# 2016 Annual Report

## Message From the President & Chairman

It is with great pleasure that we share with you **highlights from 2016**, a year when health care was thrust back to the forefront of national and state policy discussions. Health care coverage and access have been, and continue to be, key values in Massachusetts and we proudly share these values with an extraordinary community of health care leaders, advocates, and practitioners who understand the positive impact that near-universal health coverage has had on the Commonwealth.

Given the Foundation's important role in protecting the coverage gains we have made, we refined our strategic plan to better reflect our efforts in coverage and care, behavioral health, and social equity and health. This refocusing provides flexibility to respond to the new reality while continuing the work that is critical to our core mission.

For example, the **Massachusetts Health Reform Survey** – which we've conducted 8 times – was featured in *Health Affairs*, and our newer grants in social equity are showing promising results. Our major, multi-year investment in behavioral health grants and research could be a game changer for access and integration.

Meanwhile, we began working with stakeholders to coalesce around our shared goal of preserving and improving access to, and the affordability of, health care. The Foundation took the lead, along with Health Care For All, in bringing together a dedicated group – the **Massachusetts Coalition for Coverage and Care** – that is acting with the same sense of shared responsibility that was critical to our success in passing Chapter 58, our landmark health care law, in 2006.

Two longtime board members wrapped up their terms with us in 2016: James Hunt, Jr. and Charlotte Yeh, MD. Back in 2001, when Jim and Charlotte joined the board, we were a new foundation with big plans. We directed our energies and resources to expanding access to care and created a culture for change. Our support of individual programs changed the lives of some; our policy initiatives in health and access to care touched many. For the past 15 years, our board has kept that mission alive and relevant, and we thank them both for their strong and thoughtful leadership and dedicated service.

We also welcome two new board members **Antonia McGuire, RN** and Dr. Bruce Nash. Given the uncertainty in the world of health care, we are fortunate to have such an experienced group of individuals leading the Foundation's strategy and community investments. Our mission is now more important than ever.

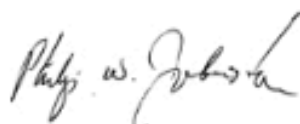
In 2017, our community undoubtedly will be affected by changes to the health policy landscape. Major challenges to the Affordable Care Act are already underway, and attempts to cut budgets or implement policies that may negatively affect health care access or coverage are sure to come. Because the implications are still unknown, it is crucial for us to strengthen our ties across sectors, share learnings, and sharpen our strategic thinking.

These are times that require leadership on preserving and expanding health care coverage. The Foundation embraces this challenge to be a leader in improving access to care, particularly for the most vulnerable among us.

Sincerely,



**Audrey Shelto**  
President



**Phil Johnston**  
Chair

# 2016

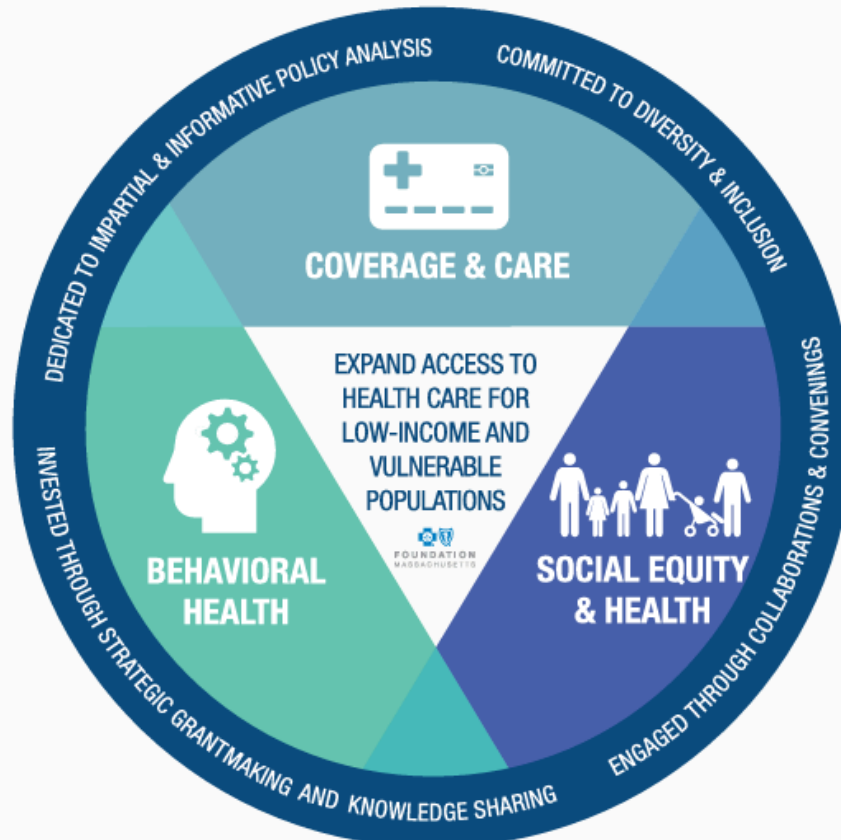


# IMPACT

**Everyone should have access to quality, affordable health care.** Insurance coverage is necessary, but not sufficient to guarantee adequate access or improved health. **We must ensure that people have a basic understanding of how to use and keep their coverage** so they can access the full array of services they need, especially treatment for mental health and substance use disorders. And, **we need to continue to promote the idea that factors beyond medical care**, including the availability of quality food and housing, **are important to overall health.**

**We are pleased to share highlights from our work in 2016**, a year where we began to see unprecedented changes to the health policy landscape. **We continue to study and fund programs that promote the health care access of low-income and vulnerable people all across the Commonwealth**, allowing us to respond to the significant changes and challenges facing our community in the most meaningful way.

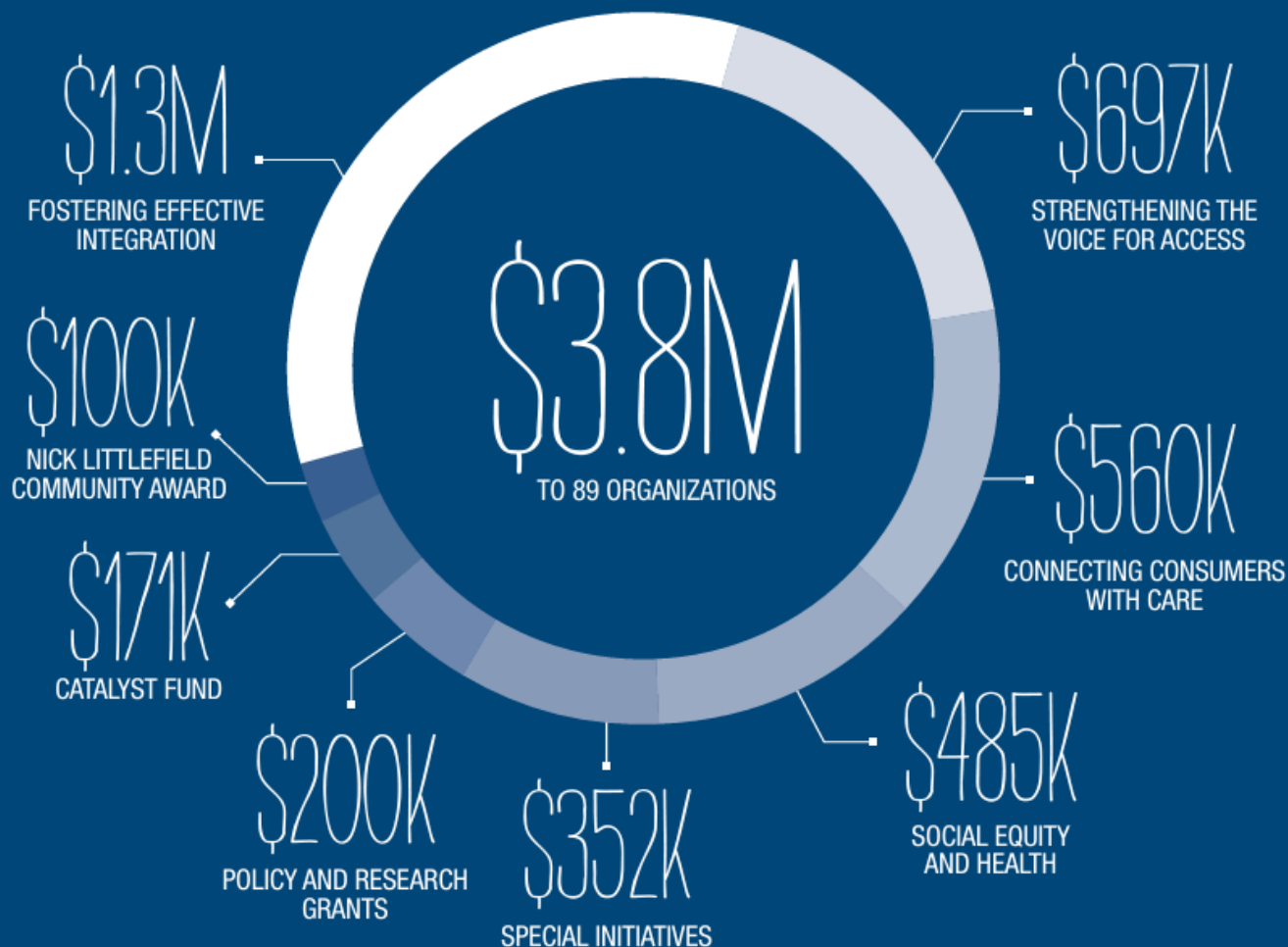
## 2017 AREAS OF FOCUS



# GRANTMAKING

# GRANTMAKING

We organize our funding priorities into defined programs that are closely tied to our mission and areas of focus.



## IMPACT

We fund programs and projects that promote sustainable improvements in health care access for low-income and vulnerable people. Through our grantmaking, we also identify trends that inform our policy work and bring to scale best practices and lessons learned. Current funding priorities include integrating behavioral health care and primary care, connecting low-income consumers with coverage and care, strengthening advocacy for health access, and examining the impact that social service spending can have on health outcomes and costs.

## POLICY & RESEARCH

The focus of our policy and research projects is the development of effective policy solutions through impartial and timely research and analysis.



The Remaining Uninsured in Massachusetts: Experiences of Individuals Living without Health Insurance Coverage

The Governor's FY2017 Budget Proposal for MassHealth (Medicaid) and Health Reform Programs

MassHealth: The Basics – Enrollment Update

Sharing Behavioral Health Information in Massachusetts: Obstacles and Potential Solutions

Coordinating Care for Patients with Alcohol or Drug Use Disorders: Effective Practices and Common Barriers in Three Centers

2015 Massachusetts Health Reform Survey

10 Years of Impact: A Literature Review of Chapter 58 of the Acts of 2006

19

PUBLICATIONS

House of Representatives FY2017 Budget Proposal for MassHealth (Medicaid) and Health Reform Programs

Massachusetts Long-Term Services and Supports: Achieving a New Vision for MassHealth

Health Care and Social Service Spending and Outcomes: How Does Massachusetts Compare with Other States?

2013-2015 Connecting Consumers with Care Grant Area Evaluation

Comparison of the FY2017 House and Senate Budget Proposals for MassHealth (Medicaid) and Health Reform Programs

UPDATED MassHealth: The Basics (June 2016)

Massachusetts Residents without Health Insurance Coverage: Understanding Those at Risk of Long-Term Uninsurance

Fostering Effective Integration of Behavioral Health and Primary Care in Massachusetts, Year One Report

Chapter 224 Tracking Tool, Updated September 2016

FY2017 General Appropriations Act Budget for MassHealth (Medicaid) and Health Reform Programs

MassHealth: The Basics – Enrollment Update (September 2016)

Community Matters: Exploring the Link Between Community Characteristics and Uninsurance in Massachusetts

IMPACT

Our work centers on access and affordability as well as how barriers to care—whether regulatory, financial, or other—seriously impact people's health outcomes, especially among low-income and vulnerable populations. Working with nationally recognized researchers and academics, we focus on projects that identify effective solutions to local and national health care issues. Our publications are widely regarded as key resources for policy makers and those interested in Massachusetts health care issues.

→ THOUGHT LEADERSHIP ←

We bring awareness of important health care issues to people

increasing awareness of important health care issues to people across the Commonwealth through collaborations, convenings, media and publications.



682

MEDIA RESULTS



147,063

WEB PAGE VIEWS



115,724

UNIQUE VIEWS



16,387

DOWNLOADS



5

CONVENINGS



4

WEBINARS



9

LEARNING  
COMMUNITIES

## IMPACT

We are proud of our ongoing role as an impartial convener of thoughtful public discussion. The Foundation team is widely recognized for their expertise in many aspects of health care and are often called upon to serve on committees and task forces around the state. Foundation-sponsored conferences assemble stakeholders from government, advocacy, academia, and the provider community to discuss timely health care issues. Much of our work is covered by local and industry media and we also proactively seek opportunities to make health care policy more accessible through guest columns and presentations.

## PROGRAMS

The Foundation runs three programs directly related to our mission of expanding access to health care.

The Massachusetts Medicaid Policy Institute (MMPI) is a FULL-TIME POLICY PROGRAM of the Foundation, devoted to **broadening the UNDERSTANDING** of the Massachusetts Medicaid program, **MassHealth.**

**MMPI**  
PROMOTES

THE DISCUSSION OF EFFECTIVE  
POLICY SOLUTIONS



through **educational materials** and **in-depth policy papers**, and hosting **convenings & webinars** attracting a wide range of stakeholders.



18 DAY PROGRAM

16 EMERGING LEADERS

RESULTING IN  
the Next Generation of  
Community Health Leaders



82 SPEAKERS

12 JOURNALISTS

55 NEWS STORIES

IMPACT

How do our programs create change? The Massachusetts Medicaid Policy Institute produces independent, nonpartisan research and analysis about MassHealth, expanding understanding of this important coverage program and broadening the dialogue about ways to improve its effectiveness. The Massachusetts Institute for Community Health Leadership develops and nurtures emerging health care leaders. The Health Coverage Fellowship expands the capacity of the media to cover issues related to health reform and access to care.

2016



IMPACT



Blue Cross Blue Shield of Massachusetts Foundation, Inc.  
for Expanding Healthcare Access

Statements of Activities and Changes in Net Assets  
(Dollars in Thousands)

	Year Ended December 31	
	2016	2015
Revenues and other support:		
Contributions	\$ 247	\$ 410
Contributions in-kind	945	1,492
Investment income	1,362	1,904
Net unrealized and realized gains (losses) on investments	5,625	(4,648)
Total net revenues and other support	8,179	(842)
Expenses:		
Grants	3,822	3,841
Professional services	1,880	2,332
Salaries and benefits	2,046	1,977
Conferences, conventions, and meetings	268	266
Occupancy and equipment maintenance	137	148
Federal excise tax expense	107	(55)
Other administrative expenses	67	86
Total expenses	8,327	8,595
Deficit of revenues and other support over expenses and change in net assets	(148)	(9,437)
Net assets at the beginning of year	100,506	109,943
Net assets at the end of year	<u>\$ 100,358</u>	<u>\$ 100,506</u>

*See accompanying notes.*