
MASSHEALTH: THE BASICS

FACTS, TRENDS AND NATIONAL CONTEXT

PREPARED BY
CENTER FOR HEALTH LAW AND ECONOMICS
UNIVERSITY OF MASSACHUSETTS MEDICAL SCHOOL

OCTOBER 2011



TABLE OF CONTENTS

■ EXECUTIVE SUMMARY	2
■ INTRODUCTION	4
■ ELIGIBILITY AND ENROLLMENT	5
■ SPENDING	19
■ COST DRIVERS	25
■ CONCLUSIONS	29

MASSHEALTH: THE BASICS

EXECUTIVE SUMMARY

MassHealth is an essential health safety net for more than 1.3 million of the state's adults and children

- The Massachusetts Medicaid program (commonly referred to as “MassHealth”) provides health insurance to nearly one-fifth of Massachusetts residents. More than half of people with disabilities, more than half of children of low-income families, and two-thirds of residents of nursing facilities rely on MassHealth to help them pay for health care. One-third of all births are covered by MassHealth.

MassHealth covers a broad cross-section of the population

- While most members are children and adults without disabilities, who represent three-fifths of total MassHealth membership, adults and children with disabilities comprise 20 percent of MassHealth members, and seniors make up another 11 percent. Nearly two-thirds of the program's spending is for the care of members with disabilities and for seniors.
- MassHealth offers eligibility to a broader segment of the Massachusetts population than many other states' Medicaid programs. In particular, more people with disabilities qualify through the state's CommonHealth program, which offers benefits to persons with disabilities that are not generally available through employers or Medicare. But this does not mean that MassHealth covers an unusually high portion of the Massachusetts population when compared to other states, because of the high rate of employer-sponsored insurance and higher incomes in Massachusetts.

MassHealth supports workers' access to private insurance

- For nearly one-quarter of its members, MassHealth coverage is secondary to other insurance such as Medicare or employer-sponsored insurance. MassHealth benefits help make employer-offered insurance more affordable for eligible low-wage workers and their children by paying for the employee share of the premium and by covering most of the cost of copayments and deductibles. In addition, MassHealth benefits make it possible for many people with disabilities to remain in the workforce.

MASSHEALTH: THE BASICS

EXECUTIVE SUMMARY (continued)

Growing MassHealth enrollment has accompanied the decline in the number of uninsured; however, most of the increase in MassHealth enrollment would have occurred in the absence of Massachusetts health reform

- MassHealth already covered a million adults and children in Massachusetts when the state's health reform law was enacted in 2006. Enrollment growth in the several categories of eligibility that were expanded or restored by health reform represents only a quarter of overall growth in MassHealth membership since implementation of reform began.

The biggest driver of MassHealth spending in recent years has been the jump in MassHealth members due to the recession, not the amount spent for each member

- Spending in the program has grown, driven by increases in enrollment due to the economic downturn. Per capita spending has grown by an average of just 1 percent per year in the past 5 years.

MassHealth spending trends reflect policy toward providing more care in community-based settings and less in facilities and inpatient settings

- In the past three fiscal years, spending on nursing facility and hospital inpatient care declined slightly while a substantial portion of growth in spending was attributable to increased spending on community based long term support services.

MassHealth is an important source of income for physicians, hospitals and other providers that low-income and uninsured individuals of all ages depend on for their care.

- Community health centers and nursing homes receive at least half of their total patient revenues from MassHealth.

MASHEALTH OVERVIEW

- MassHealth is Medicaid (Title XIX of the Social Security Act) and the State Children’s Health Insurance Program (CHIP, Title XXI)
- Federal- and state-funded and state-administered
- A central part of the Massachusetts health care safety net
 - MassHealth provides health care coverage to the Commonwealth’s most vulnerable residents.
 - It pays providers for treatments that would otherwise go uncompensated, or not provided at all.
 - It provides a valuable service to employers by covering some of the highest costs of their employees and dependents with disabilities.
 - It brings billions of federal dollars into the state to help finance physical and behavioral health care and long-term care for low-income people.
 - It is the financial engine for the publicly subsidized insurance expansion created by the 2006 state health reform law, which greatly expanded coverage in Massachusetts.
 - It is countercyclical, playing an important role in supporting people who are affected by economic downturns.

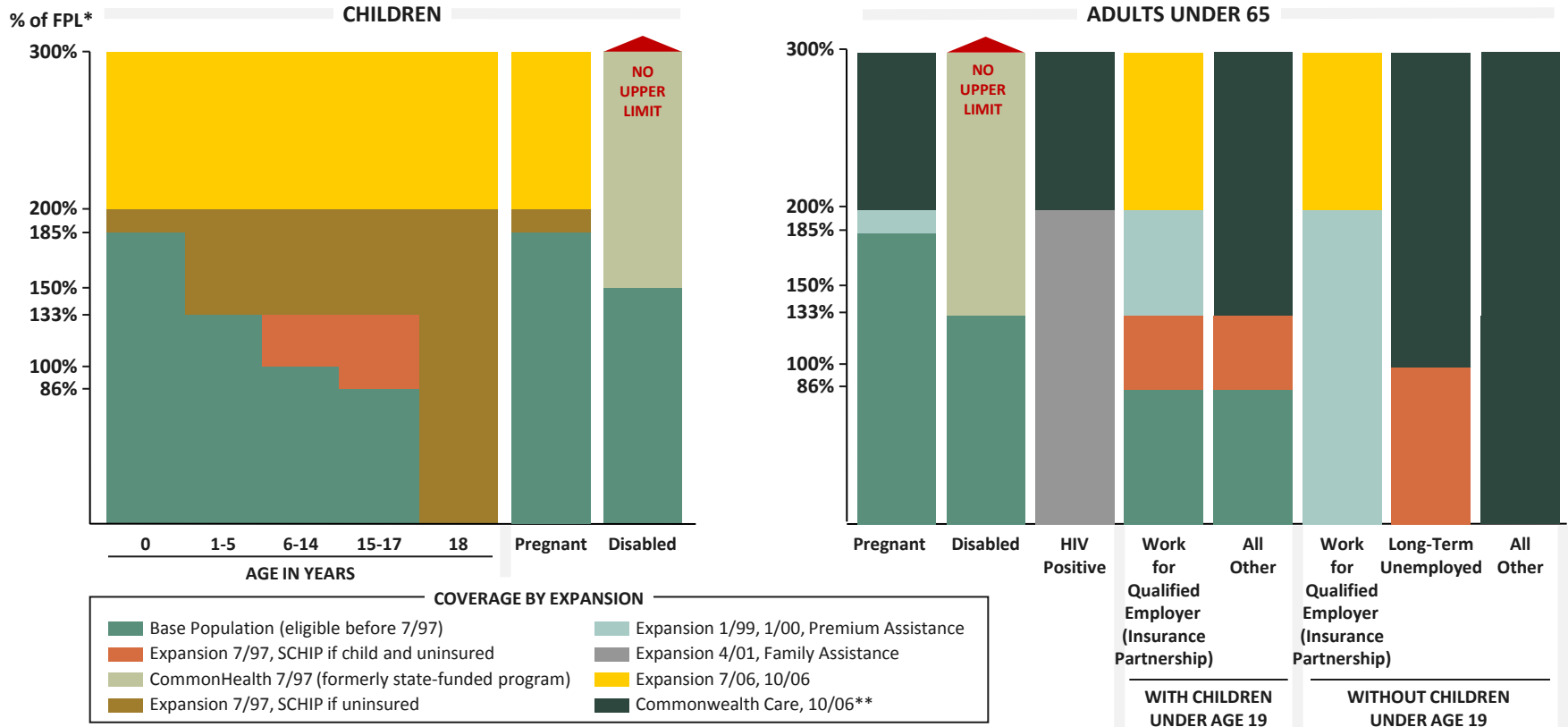
**MASHEALTH PRESENTS
CHALLENGES**

- It requires a great amount of public funding to support it.
- Many of its benefits and eligibility provisions are legal entitlements, which constrains the state’s options for managing spending during difficult economic times.
- Change is imminent as the federal 1115 demonstration waiver under which most of MassHealth operates is renewed and the national health reform law goes into effect.

THE FOLLOWING CHARTS

- Present an overview of MassHealth eligibility, enrollment and spending, providing national comparisons where possible.
 - Interstate comparisons are offered to provide perspective and should be interpreted with caution. Every state’s Medicaid program is unique – eligibility criteria, services, reliance on managed care, and use of waivers for special or general populations vary by state. Broad conclusions based on these comparisons are not advised.
- Demonstrate that MassHealth
 - Provides health insurance that is an essential gateway to health care for one-fifth of the Massachusetts population;
 - Is an important source of income for providers who serve low income patients; and,
 - Compares favorably to private insurance in controlling per capita cost increases.

MASSHEALTH ELIGIBILITY OVERVIEW

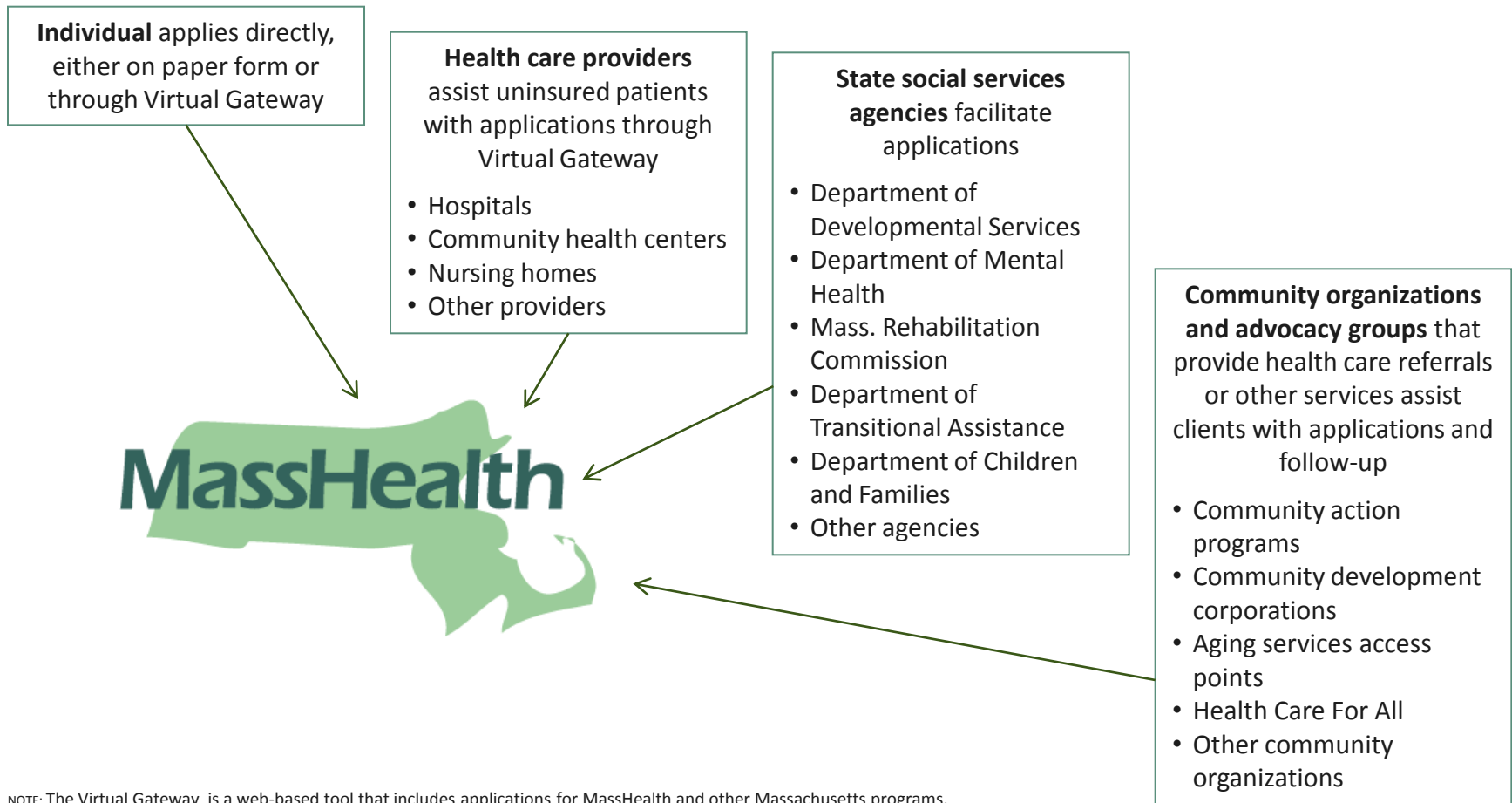


*FPL = federal poverty level

**Commonwealth Care excludes employed people whose employers offer coverage. Commonwealth Care Bridge, not shown on this chart, covers federally non-qualified legal immigrants with incomes up to 300% FPL. Undocumented immigrants are not eligible for either MassHealth (except for limited emergency coverage) or Commonwealth Care.

NOTE: In general, the eligibility level for seniors age 65 and older is 100% of FPL and assets of \$2,000 for an individual or \$4,000 for a couple. More generous eligibility rules apply for seniors residing in nursing facilities or enrolled in special waiver programs. There is no income limit for seniors who need long-term services, but an individual contribution may be required.

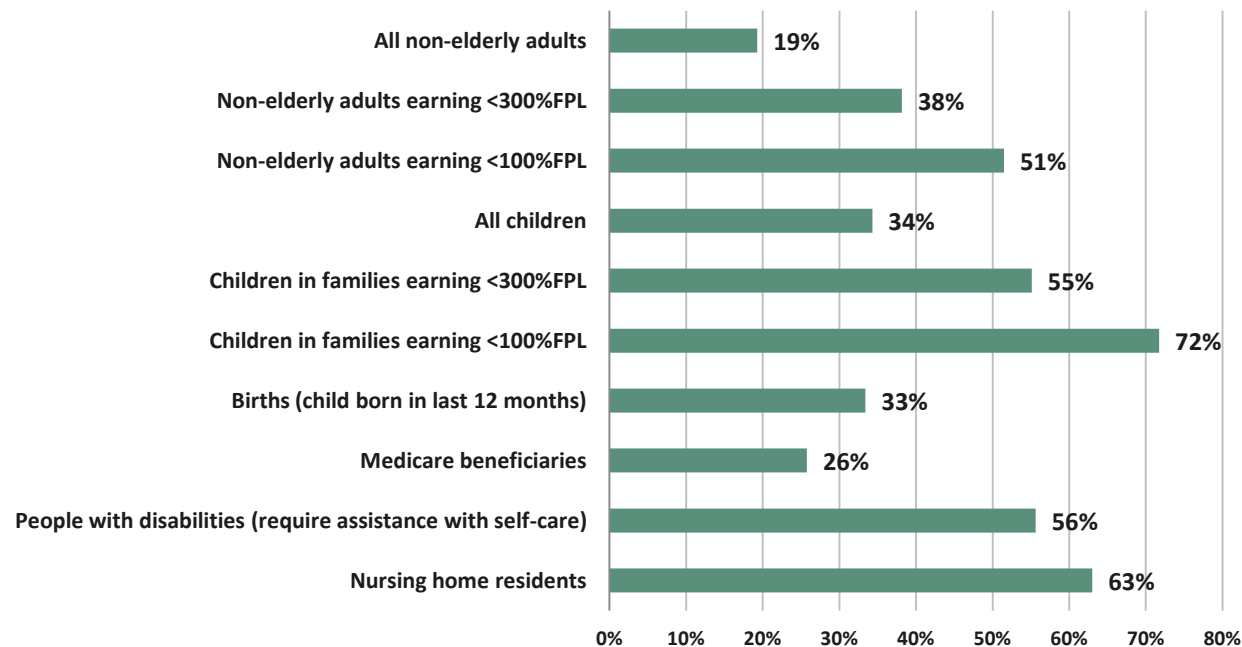
MANY DOORS TO MASSHEALTH



NOTE: The Virtual Gateway is a web-based tool that includes applications for MassHealth and other Massachusetts programs.

MASSHEALTH IS IMPORTANT TO MANY POPULATION GROUPS

PERCENT OF SELECT MASSACHUSETTS POPULATIONS COVERED BY MASSHEALTH

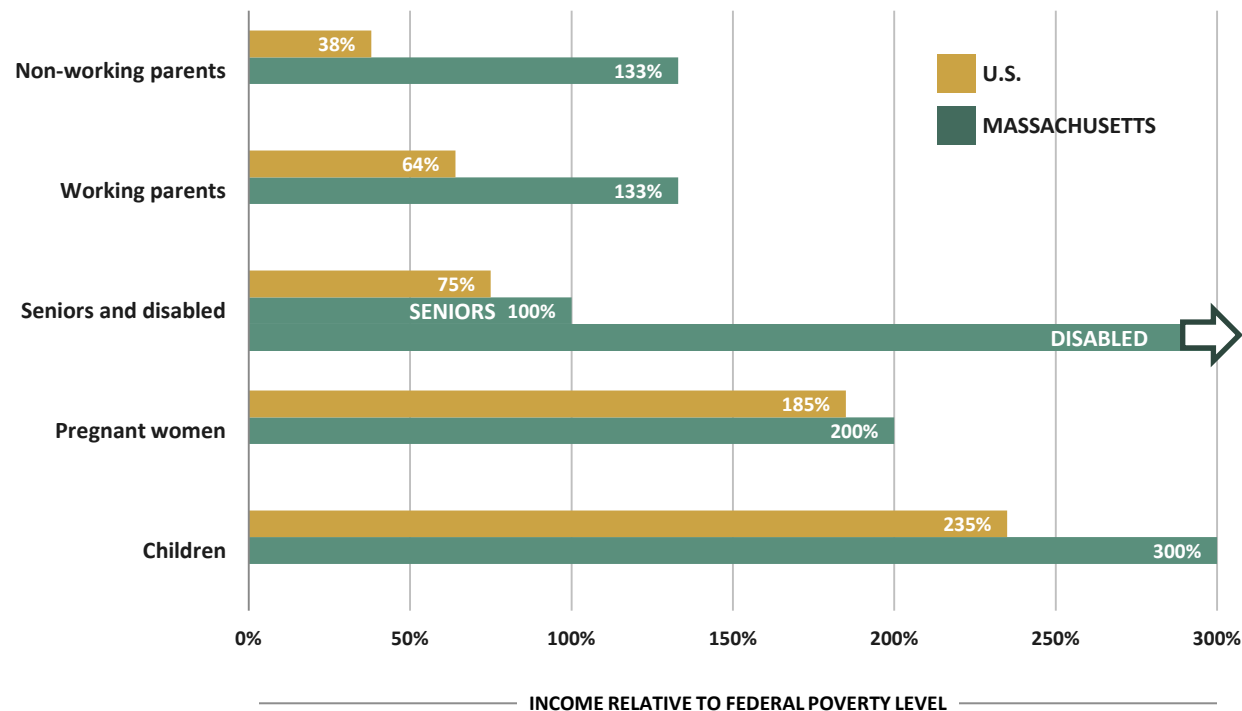


More than half of poor (<100% FPL) and near-poor children (100-300% FPL), half of poor adults and people with disabilities, and nearly two-thirds of nursing home residents are MassHealth members. One-quarter of people covered by Medicare rely on MassHealth to assist with premiums and cost sharing and to cover services, such as long-term services and supports, which Medicare does not cover.

SOURCES: Author's calculations using the 2009 American Community Survey (ACS). Nursing home data from Kaiser State Health Facts (C. Harrington, H. Carrillo, and B. Blank. Table 6, "Nursing, Facilities, Staffing, Residents, and Facility Deficiencies, 2004 Through 2009," Department of Social and Behavioral Sciences, University of California, San Francisco, accessed February 2011). Data for "all children" and "all elderly adults" from Division of Health Care Finance and Policy, Health Insurance Coverage and Access to Care in Massachusetts: Detailed Tabulations based on the 2010 Massachusetts Health Insurance Survey, November 2010 and MassHealth Snapshot, November 2010.

INCOME ELIGIBILITY LEVELS FOR MASSHEALTH ARE CURRENTLY HIGHER THAN NATIONAL MEDIAN

ELIGIBILITY LEVELS BY CATEGORY, MASSHEALTH AND MEDIAN U.S., 2009



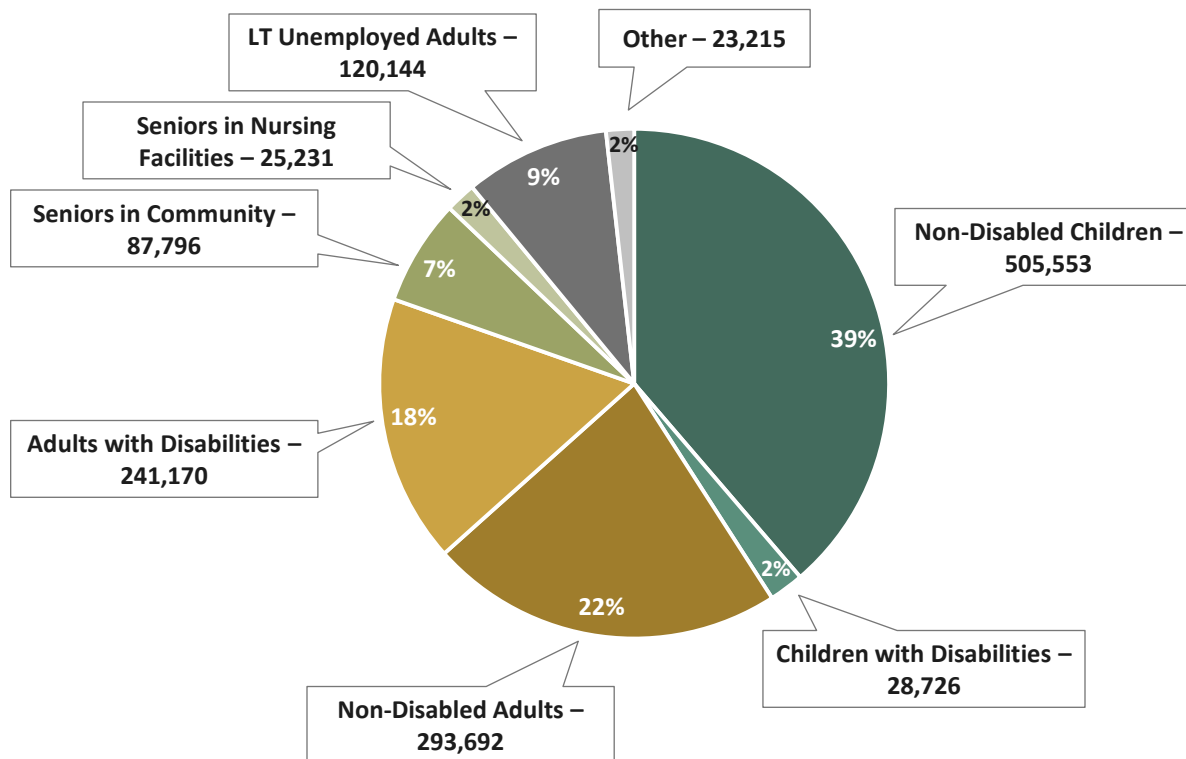
Starting in 2014, all states will be required to provide Medicaid coverage to adults with incomes at or below 133% FPL.

In Massachusetts, as opposed to most other states, there is no income eligibility limit for people with disabilities. The CommonHealth program offers MassHealth coverage, subsidized at lower incomes and with a sliding scale premium as incomes rise.

source: Kaiser Commission on Medicaid and the Uninsured, Median Medicaid/CHIP Income Eligibility Thresholds, 2009.

MASSHEALTH COVERS CHILDREN, ADULTS & SENIORS, AND OFTEN SUPPLEMENTS OTHER INSURANCE

PERCENT OF TOTAL MASSHEALTH ENROLLMENT, JUNE 2011



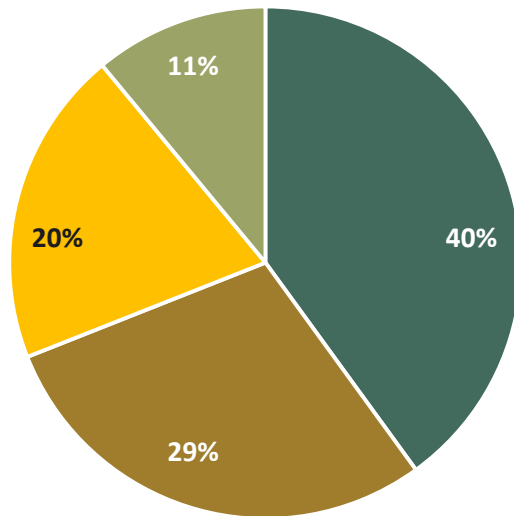
SOURCE: Office of Medicaid, June 2011 snapshot report.

MassHealth members range from the very young to the very old. Members with disabilities, representing 20 percent of membership, receive coverage for long-term care services from MassHealth that are not usually available through other health insurance sources.

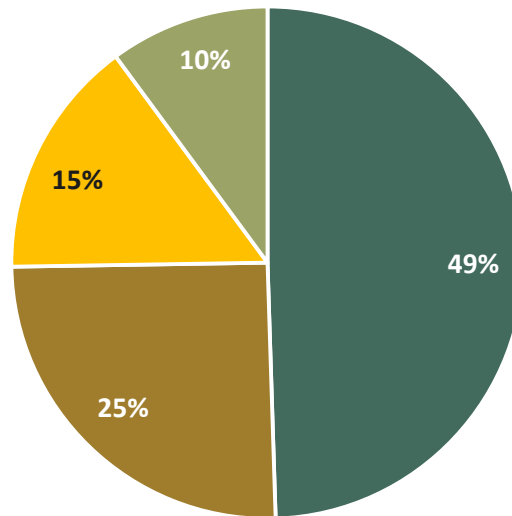
About 24 percent of people enrolled in MassHealth have coverage through Medicare or through an employer. In these cases, MassHealth acts as secondary coverage, providing additional benefits that MassHealth covers but others do not. In some circumstances, MassHealth also pays members' premiums and cost sharing for their employer-sponsored or Medicare coverage, if it is determined to be more economical than paying for full MassHealth benefits.

COMPARED TO THE REST OF THE NATION, MASSHEALTH'S MEMBERSHIP INCLUDES MORE ADULTS AND NON-ELDERLY PEOPLE WITH DISABILITIES

MASSACHUSETTS, 2009



U.S., 2007



● Non-Disabled
Children

● Non-Disabled
Adults

● Adults &
Children with
Disabilities

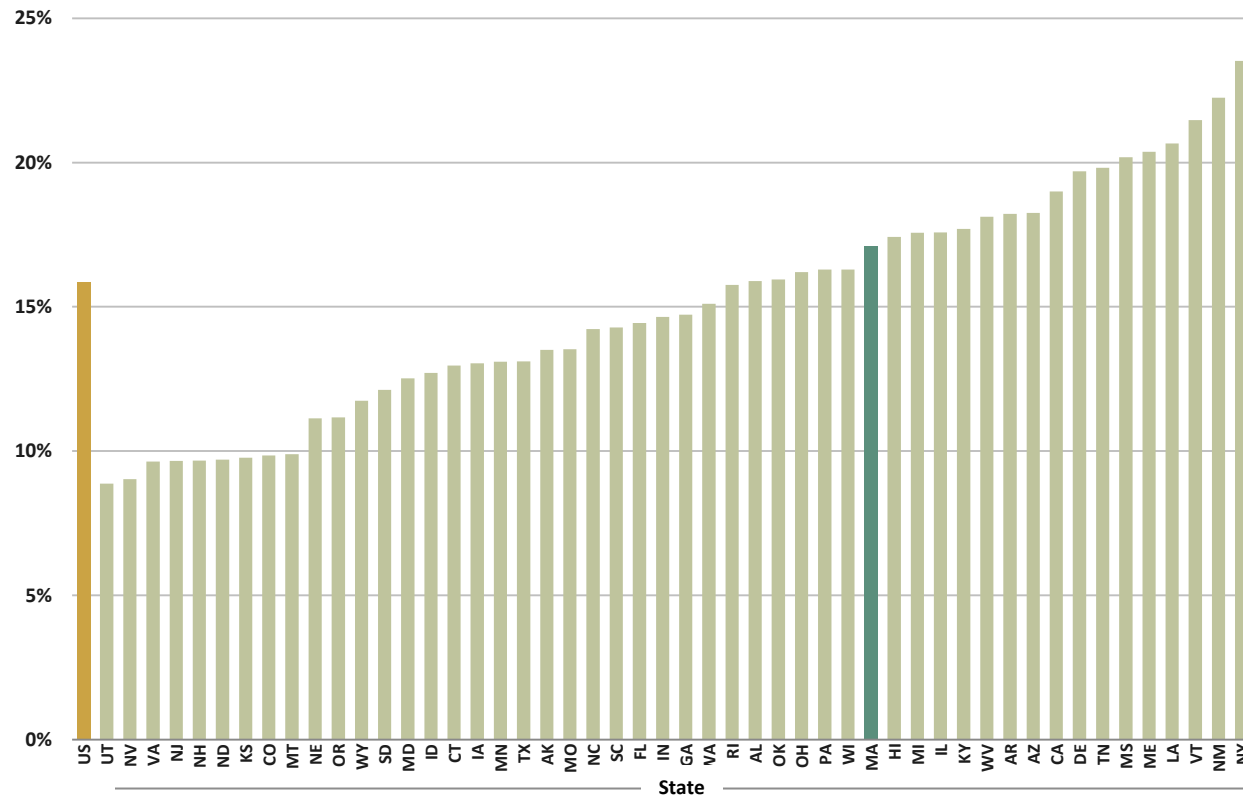
● Seniors

People with disabilities comprise a larger share of Medicaid membership in Massachusetts than nationally. MassHealth CommonHealth provides opportunity for more people with disabilities to get coverage. Seniors make up about the same portion of Medicaid enrollment in Massachusetts and the nation.

SOURCES: MassHealth Budget Unit, "EHS Results" www.mass.gov/hhs/ehsresults; Kaiser Commission on Medicaid and the Uninsured.

MASSHEALTH PLAYS A SIGNIFICANT BUT NOT DISPROPORTIONATE ROLE IN THE COVERAGE OF MASSACHUSETTS RESIDENTS

PERCENTAGE OF POPULATION ENROLLED IN MEDICAID, 2009

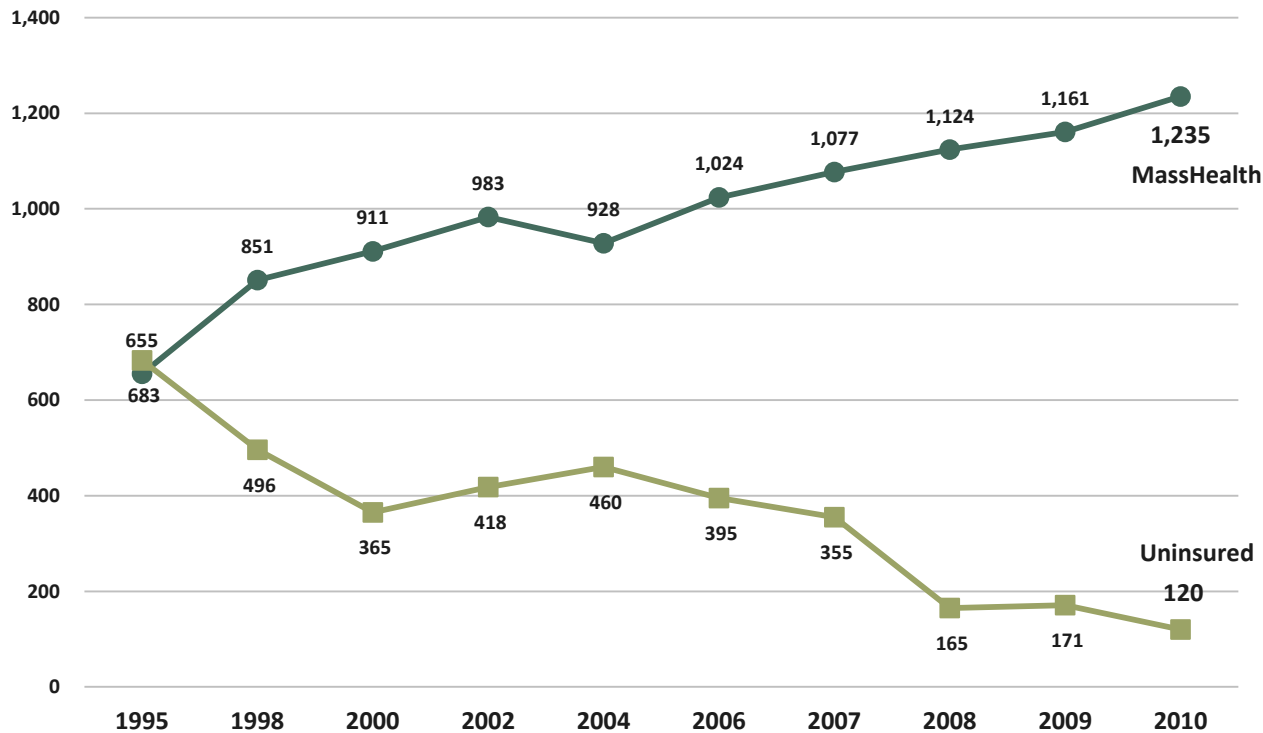


SOURCES: Calculations based on Medicaid enrollment data from December 2009, Henry J. Kaiser Family Foundation, Statehealthfacts.org; Population data is from the U.S. Census Bureau, Annual Estimates of the Resident Population for the United States, Regions, States, and Puerto Rico: April 1, 2000 to July 1, 2009 (NST-EST2009-01).

Despite its much lower uninsured rate and higher Medicaid eligibility standards than many other states, MassHealth does not cover an unusually high percentage of the state population. Massachusetts has relatively high incomes and a high rate of employer-sponsored insurance. In addition, MassHealth has generally been more successful than many other states in ensuring those eligible for Medicaid are enrolled.

GROWING MASSHEALTH ENROLLMENT HAS ACCOMPANIED THE DECLINE IN THE NUMBER OF UNINSURED

TRENDS IN MASSHEALTH ENROLLMENT AND UNINSURED, 1995-2010
(THOUSANDS)



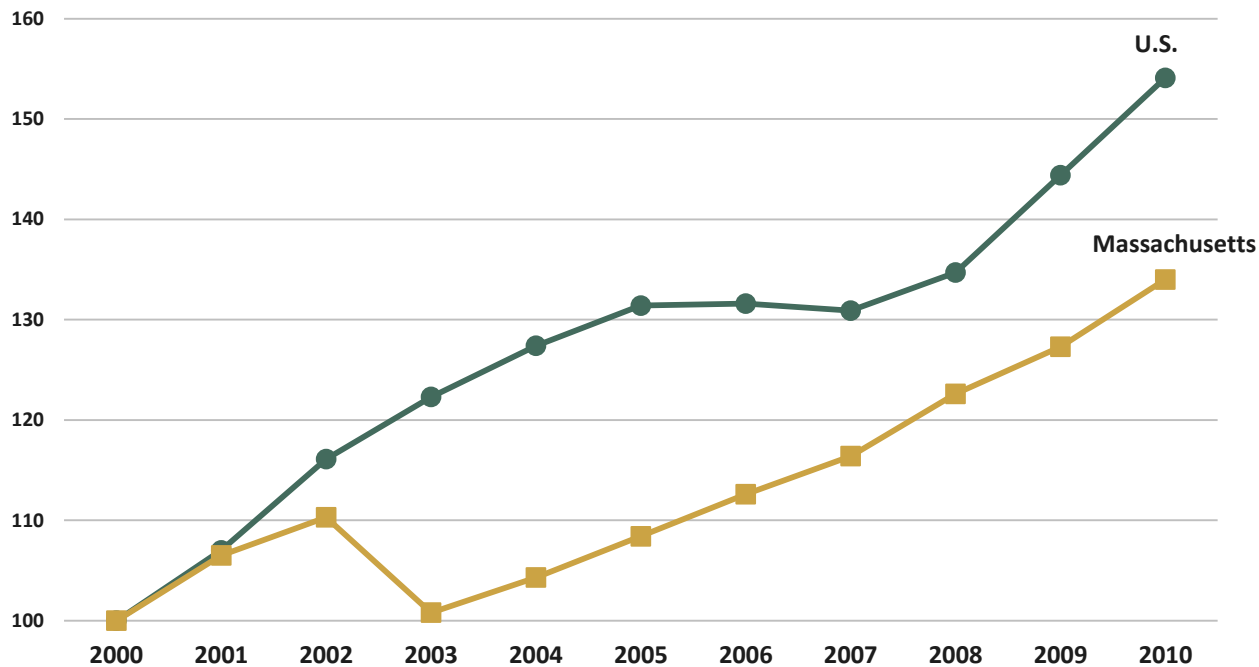
SOURCES: MassHealth figures are from the Office of Medicaid and are monthly averages, except 1998-2002 which are as of June 30. Uninsured numbers are from the Division of Health Care Finance and Policy, from a survey in that year. 1995 Uninsured numbers from Blendon et al., "Massachusetts Residents Without Health Insurance, 1995," Harvard School of Public Health.

Since the MassHealth waiver began in 1997, MassHealth membership has steadily grown, and the number of Massachusetts residents without insurance has steadily declined since 2004. Commonwealth Care, introduced in 2007, has also played a role in recent declines in the number of uninsured.

Most of the recent increase in MassHealth enrollment has been driven by the recession. Enrollment growth in categories of eligibility that were expanded under Massachusetts' health reform law represented only a quarter of overall growth in MassHealth enrollment since implementation of reform.

MEDICAID ENROLLMENT HAS GROWN IN THE PAST DECADE, BOTH NATIONALLY AND IN MASSACHUSETTS

U.S. AND MASSACHUSETTS MEDICAID ENROLLMENT GROWTH INDICIES
(YEAR 2000 = 100)



NOTE: The decline in Massachusetts enrollment in 2003 was due to the changes to the MassHealth Basic program that resulted in the disenrollment of thousands of members (many of whom were later reinstated to the MassHealth Essential program), and the tightening of requirements for the periodic redetermination of eligibility.

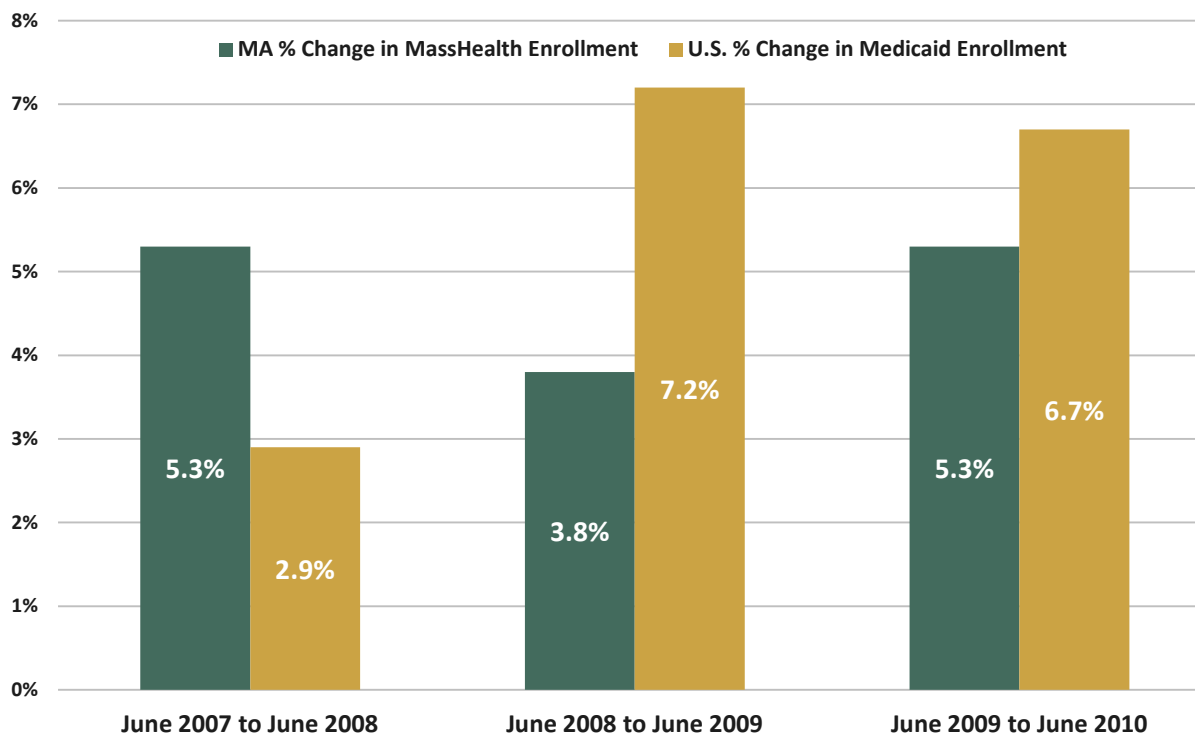
SOURCE: Kaiser Commission on Medicaid and Uninsured, "Medicaid Enrollment: June 2010 Data Snapshot," February 2011. June data is used for all years.

Medicaid enrollment increased at a similar rate in Massachusetts and the U.S. between 2003 and 2010.

The acceleration in growth in the U.S. since 2008 is due largely to the recession. Enrollment in Massachusetts did not grow as quickly during that period because employer-sponsored insurance did not decline as much as it did in the nation as whole.

ENROLLMENT IN MEDICAID HAS INCREASED SINCE THE ONSET OF THE RECESSION

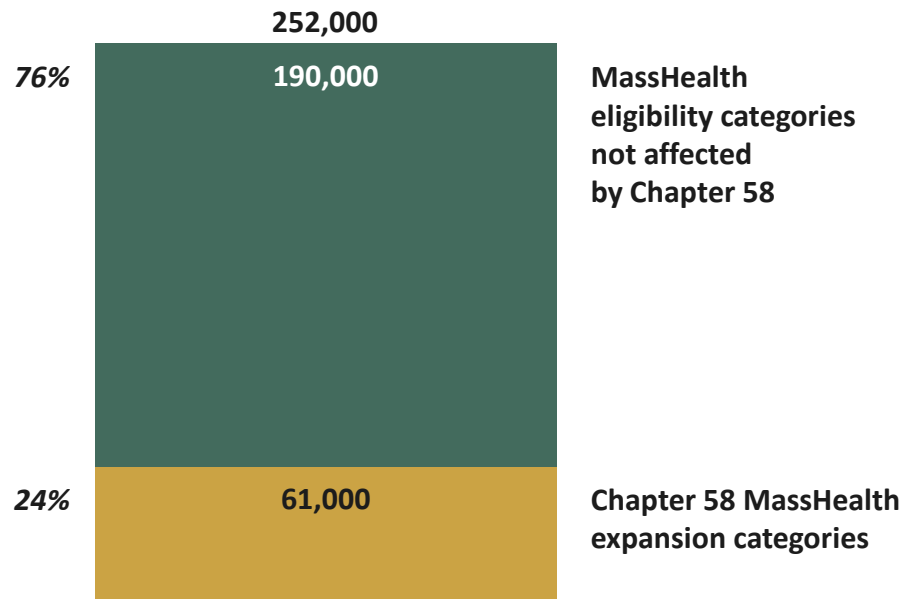
U.S. AND MASSACHUSETTS PERCENTAGE GROWTH IN MEDICAID ENROLLMENT



Enrollment in Medicaid increased at a slower rate in Massachusetts than nationally during the height of the economic recession in June 2008 through June 2010. One possible explanation is that most people eligible for MassHealth were already enrolled. In addition, some people who lost their private health insurance during the recession obtained coverage through other programs, such as Commonwealth Care (which serves adults with incomes <300% FPL who don't have access to employer sponsored insurance) and the Medical Security Program (which subsidizes coverage for unemployed adults).

SOURCES: Kaiser Commission on Medicaid and the Uninsured, "Medicaid Enrollment: June 2010 Snapshot," Medicaid Facts, February 2011.

GROWTH IN MASSHEALTH ENROLLMENT HAS BEEN PRIMARILY IN CATEGORIES THAT WERE NOT EXPANDED UNDER REFORM

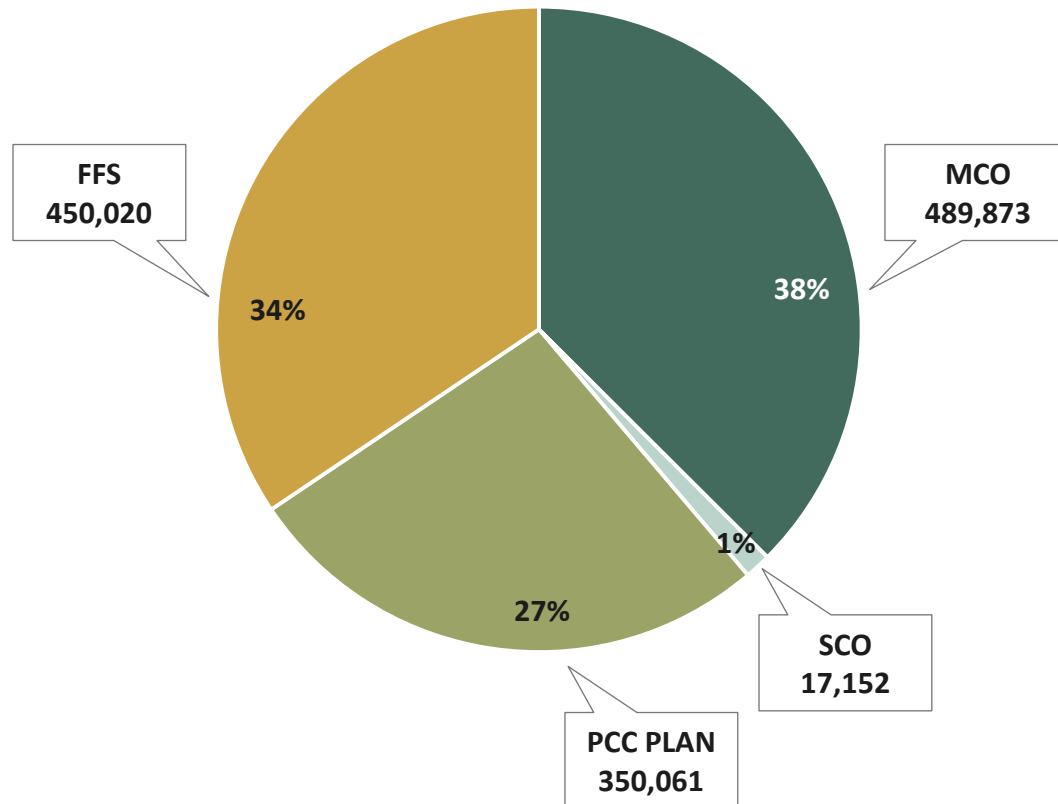


MASSEALTH ENROLLMENT GROWTH
JUNE 2006 TO DECEMBER 2010

Most (76 percent) of MassHealth enrollment growth has been in eligibility categories that existed before health reform, and therefore would have occurred in the absence of the state's health reform law.

MORE THAN THREE IN FIVE MASSHEALTH MEMBERS ARE ENROLLED IN MANAGED CARE

MASSHEALTH ENROLLMENT BY PAYER TYPE, JUNE 2011



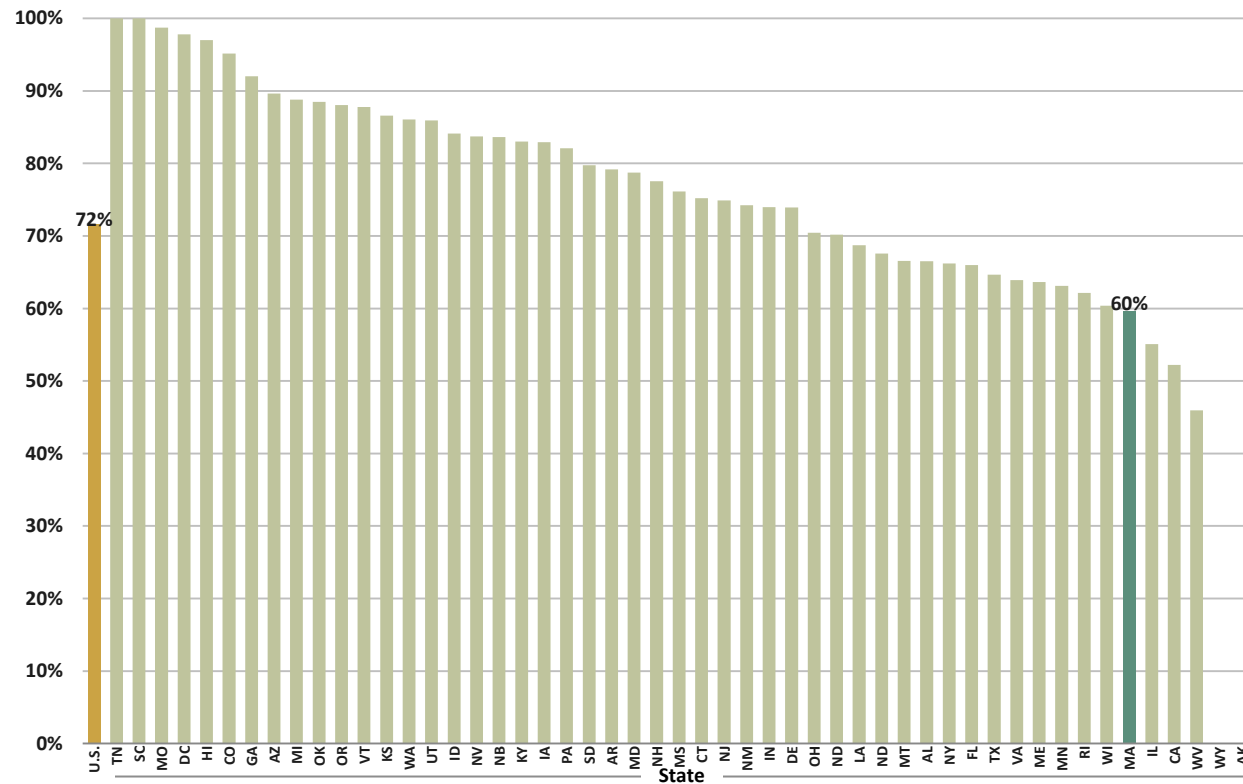
SOURCE: MassHealth, June 2011 snapshot report.

For persons under age 65, MassHealth offers two options for managed care: enrolling in one of five private managed care organizations (MCOs), or in the MassHealth-administered Primary Care Clinician (PCC) Plan. Seniors may enroll in managed care via Senior Care Options (SCO). More than three in five Massachusetts residents enrolled in Medicaid have managed care through one of these three options.

Those in fee for service (FFS) include seniors not enrolled in SCO, people with other coverage as primary (e.g., Medicare or employer sponsored insurance) and people who are permanently institutionalized.

MANY OTHER STATES' MEDICAID PROGRAMS RELY MORE THAN MASSACHUSETTS ON MANAGED CARE ARRANGEMENTS

PERCENTAGE OF MEDICAID MEMBERS ENROLLED IN SOME FORM OF MANAGED CARE, 2009



NOTE: Managed care includes managed care organization and primary care case management models. In Massachusetts, managed care includes enrollees in private Managed Care Organizations (MCO), MassHealth's Primary Care Clinician (PCC) program, and the Senior Care Options (SCO) program. Managed care percentage differs from preceding slide due to different time periods and data sources.

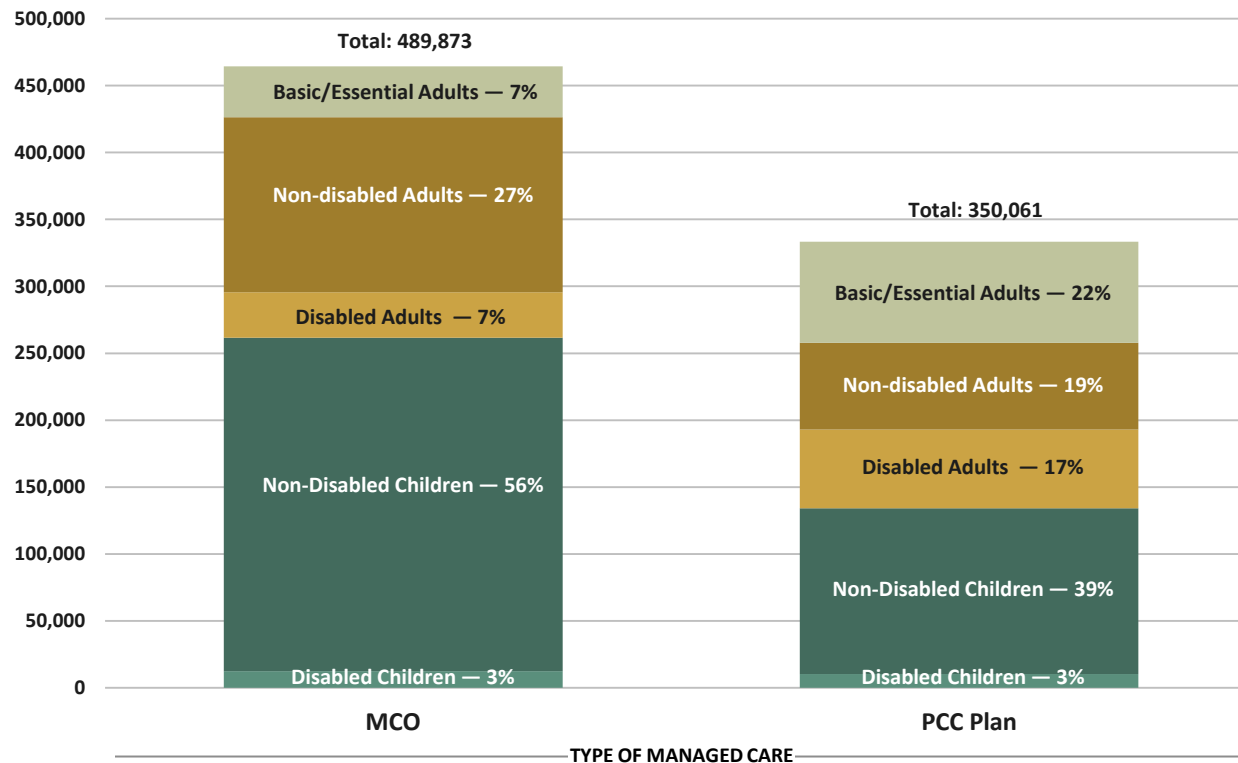
SOURCES: Henry J. Kaiser Family Foundation, Statehealthfacts.org.

Managed care penetration in MassHealth is well below the national average for Medicaid programs. "Managed care arrangement" includes primary care case management programs as well as managed care organization contracts and long term managed care contracts.

In MassHealth, members for whom Medicaid is secondary to Medicare or employer-sponsored coverage are not enrolled in managed care (except for a relatively small number of seniors who opt to enroll in the Senior Care Options program).

MCOs SERVE A LESS MEDICALLY COMPLEX POPULATION THAN THE PCC PLAN

MASSHEALTH MCO AND PCC PLAN ENROLLMENT BY POPULATION TYPE, JUNE 2011



NOTE: Chart shows enrollment for members under age 65.

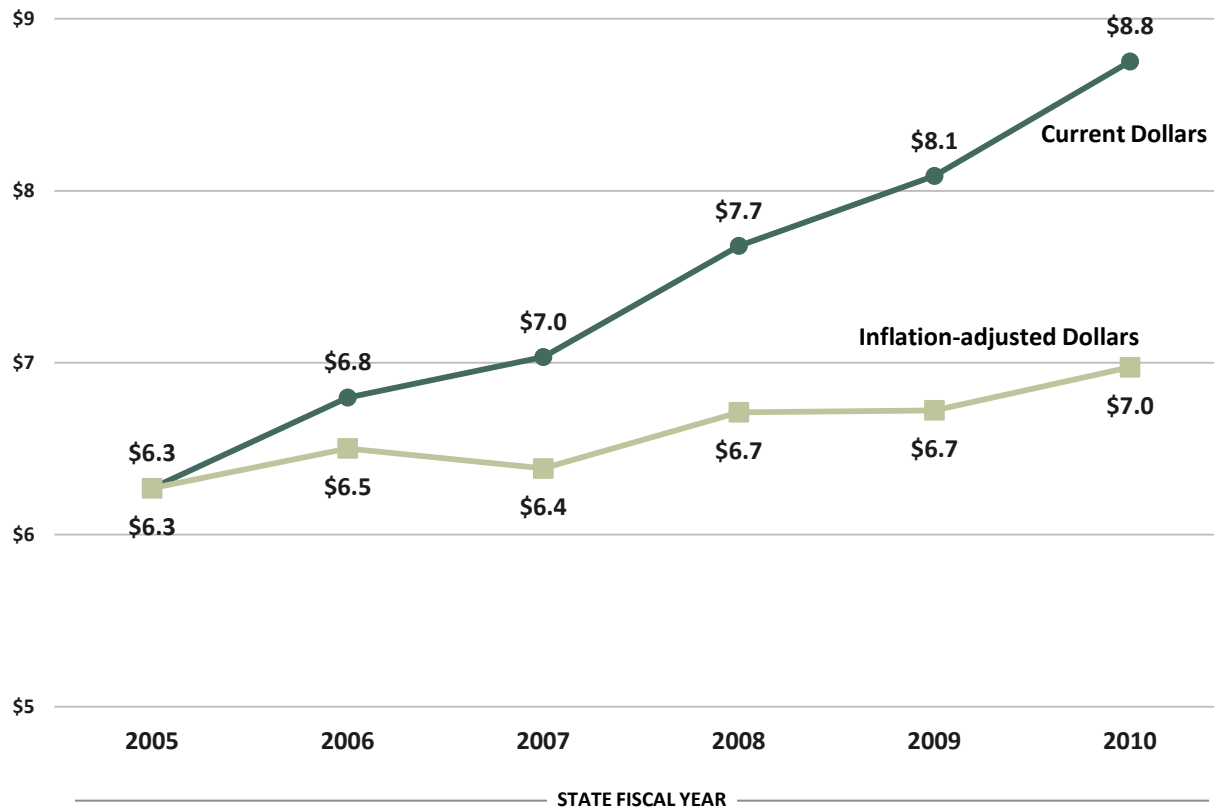
SOURCE: MassHealth, June 2011 Snapshot Report.

MassHealth members with disabilities and other medically complex care needs are generally more likely to enroll in the Primary Care Clinician (PCC) Plan rather than with an MCO. MCOs serve a less complex population – nearly 60 percent are non-disabled children and nearly 30 percent are non-disabled adults.

The PCC Plan, on the other hand, serves a population with more complex care needs — more than 20 percent of PCC Plan enrollees are people with disabilities and 22 percent are long term unemployed (Basic/Essential) who are more likely to have behavioral health needs.

NOMINAL MASSHEALTH SPENDING HAS GROWN BY MORE THAN ONE-THIRD SINCE 2005; WHEN ADJUSTED FOR MEDICAL INFLATION SPENDING GROWTH HAS BEEN 11 PERCENT

MASSHEALTH SPENDING, SFY 2005-2010
(BILLIONS OF DOLLARS)



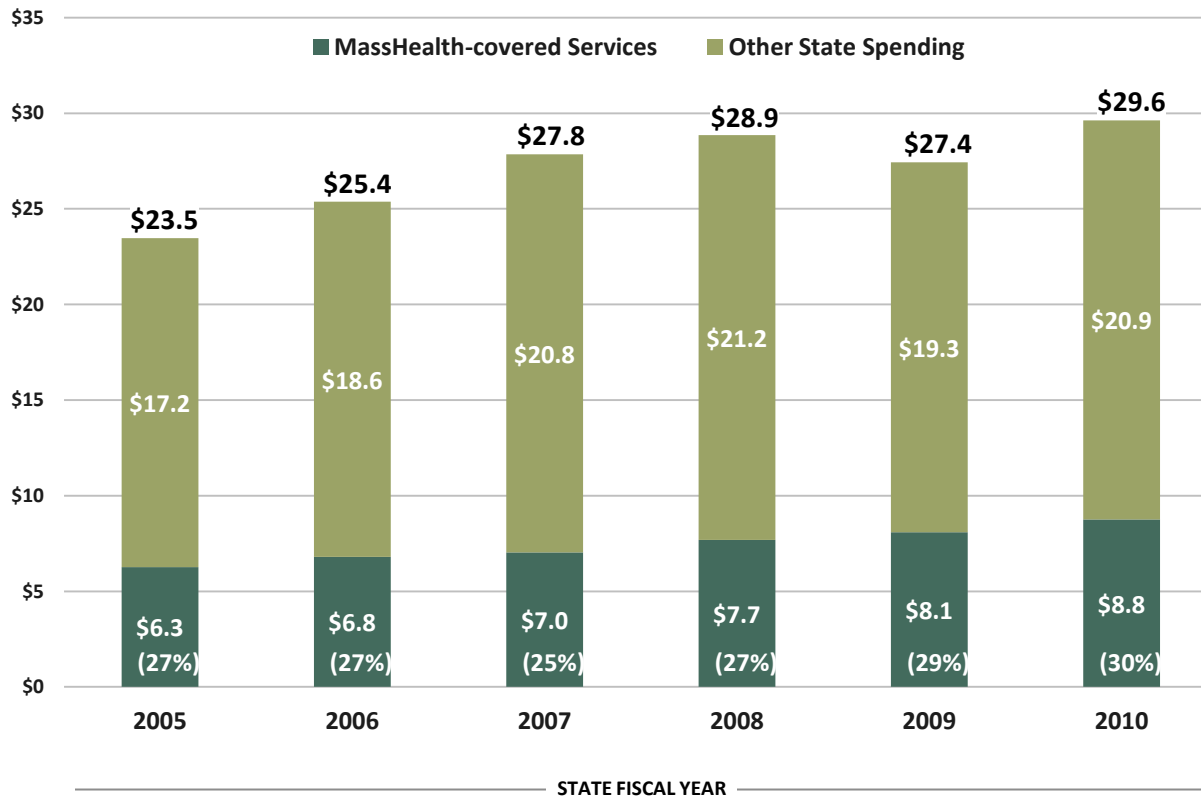
SOURCE: MassHealth Budget Office. Inflation adjustment uses the Medical Consumer Price Index for the Boston area, from the Bureau of Labor Statistics

MassHealth spending has increased in nominal terms from \$6.3 billion in state fiscal year (SFY) 2005 to \$8.8 billion in SFY 2010. Adjusting for medical inflation, the increase over the six years was approximately 11 percent.

These are “gross” spending amounts meaning that they include both state and federal revenues; the federal government reimburses Massachusetts for about half of its MassHealth spending.

FEDERAL AND STATE SPENDING ON MASSHEALTH NOW REPRESENTS NEARLY 30 PERCENT OF THE STATE BUDGET

MASSHEALTH AS A PROPORTION OF ALL STATE SPENDING
(BILLIONS OF DOLLARS)



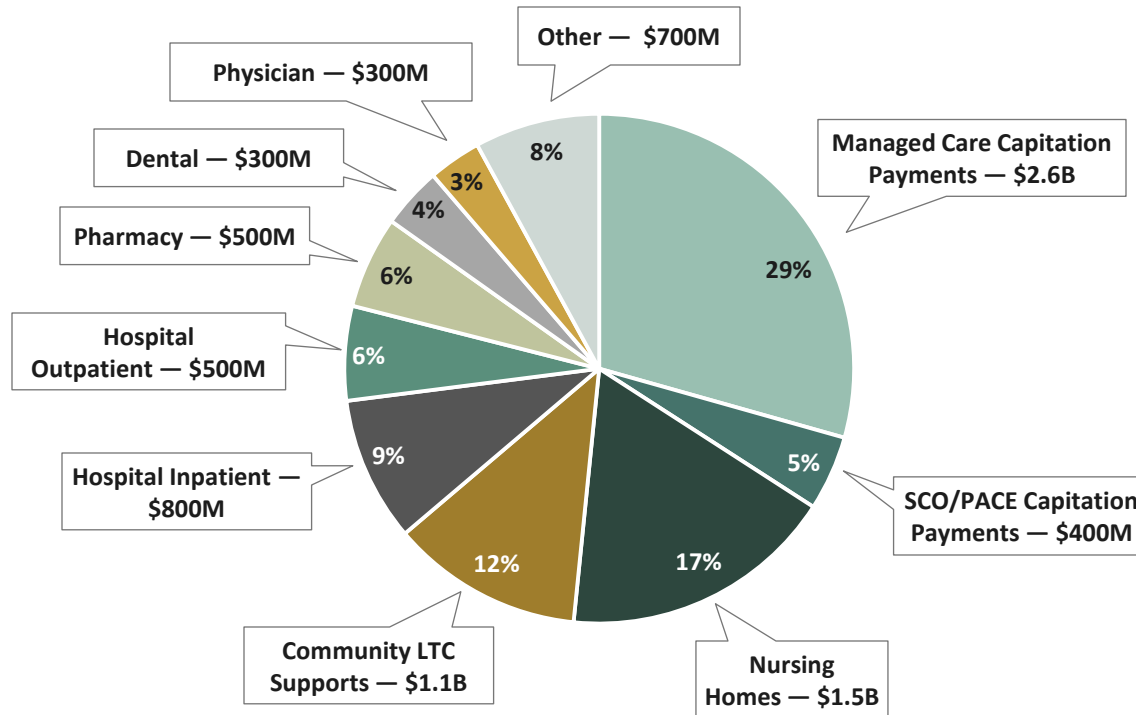
Spending for MassHealth-covered services remained just over a quarter of all state spending between 2005 and 2008. The effects of the economic recession swelled Medicaid enrollment and shrank state revenues in 2009 and 2010, which slowed overall state spending, thus increasing Medicaid spending to 30% of the budget.

The federal government reimburses the state's general fund for more than half of its spending on MassHealth (not shown in chart). In 2009 and 2010, the match was enhanced further by federal stimulus spending.

SOURCES: EOHS (MassHealth data); Office of the Comptroller, Statutory Basis Financial Reports (other state spending).

MASSHEALTH SPENDING BY SERVICE TYPE IN STATE FISCAL YEAR 2010

TOTAL MASSHEALTH SPENDING = \$8.8B



NOTE: "Other" includes Part D clawback (\$185M), Transportation (\$139M), community health centers (\$93M), and smaller amounts of spending on rest homes, vision care, EI/Chapter 766, hearing care, group practice organization, family planning clinics, renal dialysis clinics, ambulatory surgery center, eye glasses, DME/Oxygen, imaging/radiation centers, certified independent labs, psychologists, mental health clinics, psychiatric day treatment, substance abuse services, and Medicare crossover payments.

SOURCE: MassHealth Budget Office.

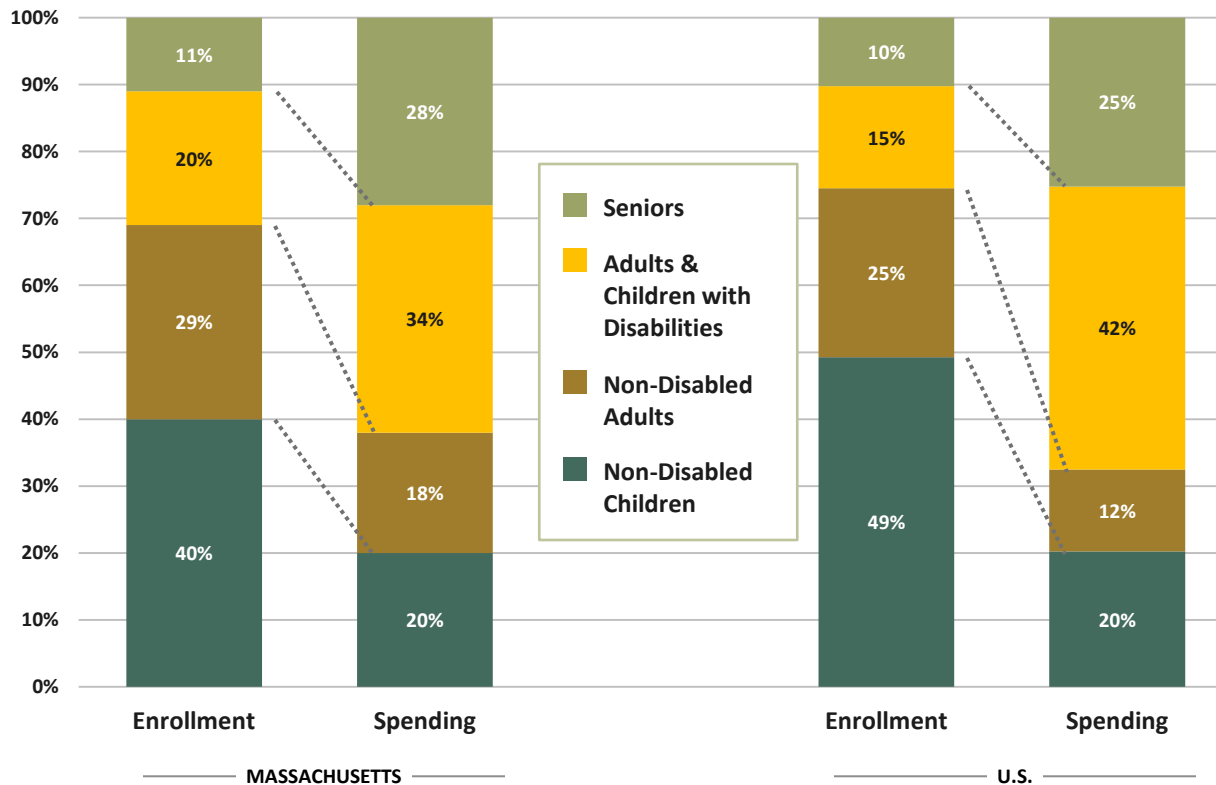
MassHealth spent \$8.8B on services for its members in State Fiscal Year 2010. More than a third of spending – in the form of capitation payments – went to managed care organizations (MCO) and the PCC Plan's behavioral health carve out vendor (29%), or to senior care options (SCO) plans (5%). Roughly 66 percent of MassHealth members are enrolled in one of these three plans.

Nursing home payments accounted for 17% of spending, though only 2-3% of MassHealth members reside in nursing homes. Community-based long-term care supports (e.g., personal care attendants, home health aides, adult foster care) accounted for another 12%.

Hospital care was about 15% of spending, divided between inpatient (9%) and outpatient (6%) services.

MEDICAID SPENDING ON BEHALF OF VARIOUS POPULATIONS

**DISTRIBUTION OF MASSHEALTH AND US AVERAGE
MEDICAID ENROLLMENT AND SPENDING BY VARIOUS POPULATIONS**

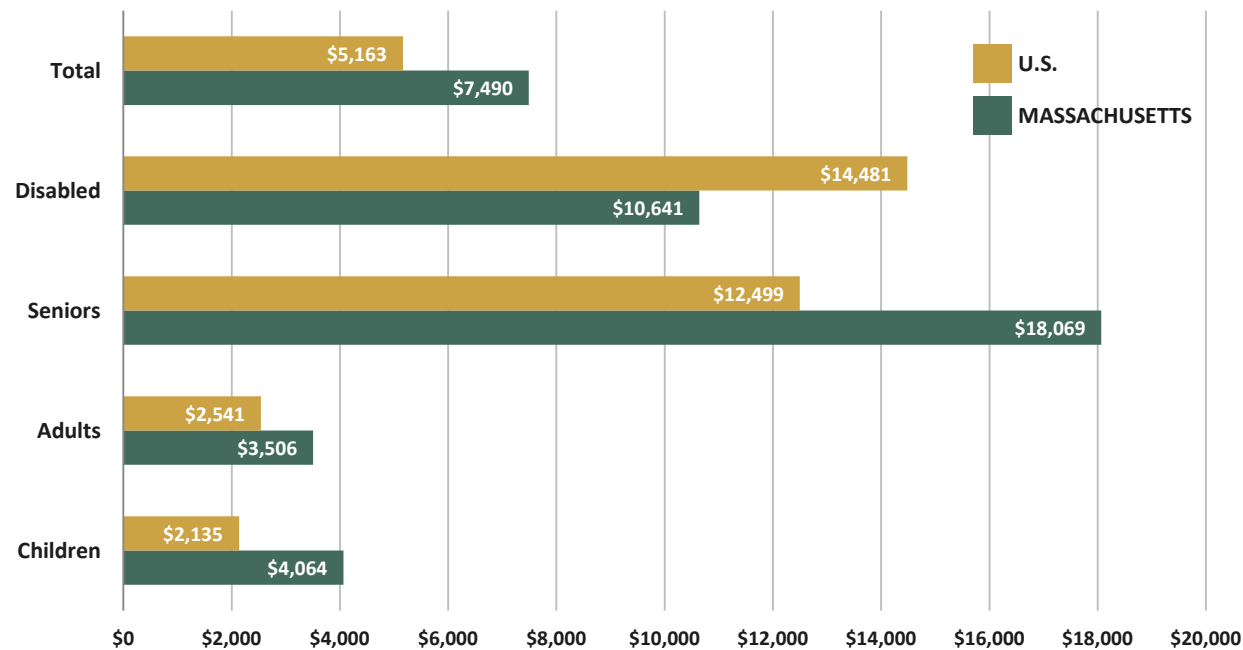


MassHealth spending is not spread evenly across the various categories of beneficiaries. Nearly two-thirds of benefit spending in SFY 2009 was for services to people with disabilities and seniors, though these groups comprised less than a third of MassHealth membership. The same general pattern holds for Medicaid spending nationally.

SOURCES: MassHealth Budget Unit, "EHS Results" www.mass.gov/hhs/ehsresults, 2009 data; Kaiser Commission on Medicaid and the Uninsured, 2007 data.

MASSHEALTH SPENDS MORE THAN THE NATIONAL AVERAGE FOR SOME, BUT NOT ALL, TYPES OF MEMBERS

MEDICAID PAYMENTS PER ENROLLEE PER YEAR, FY 2007

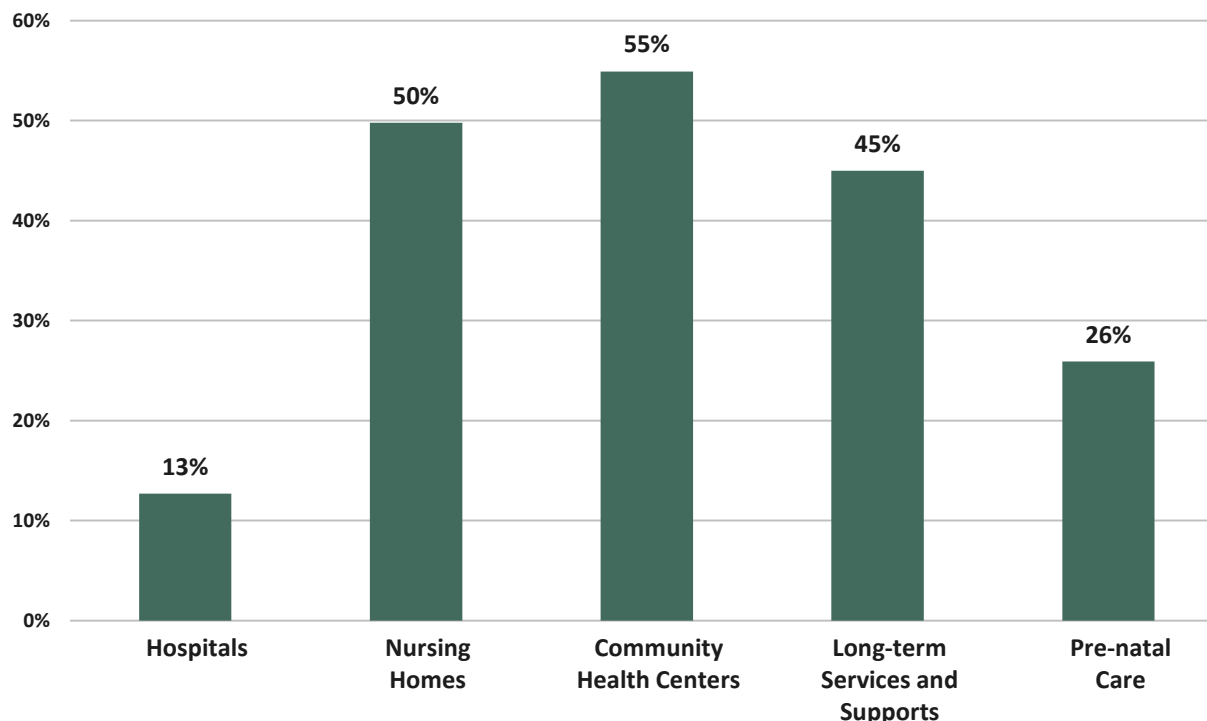


Massachusetts spends more per member than the national average for seniors, non-elderly adults without disabilities and non-disabled children. Massachusetts spends less per member for people with disabilities. This may be due in part to CommonHealth, a more inclusive program for people with disabilities that includes many members with other sources of primary coverage (Medicare or an employer) for whom MassHealth only pays for services and cost sharing not covered by the primary coverage.

SOURCES: Kaiser Family Foundation, Statehealthfacts.org.

MASSHEALTH SPENDING IS IMPORTANT TO MANY TYPES OF PROVIDERS

MASSHEALTH AS A PERCENTAGE OF PROVIDERS' PATIENT REVENUES



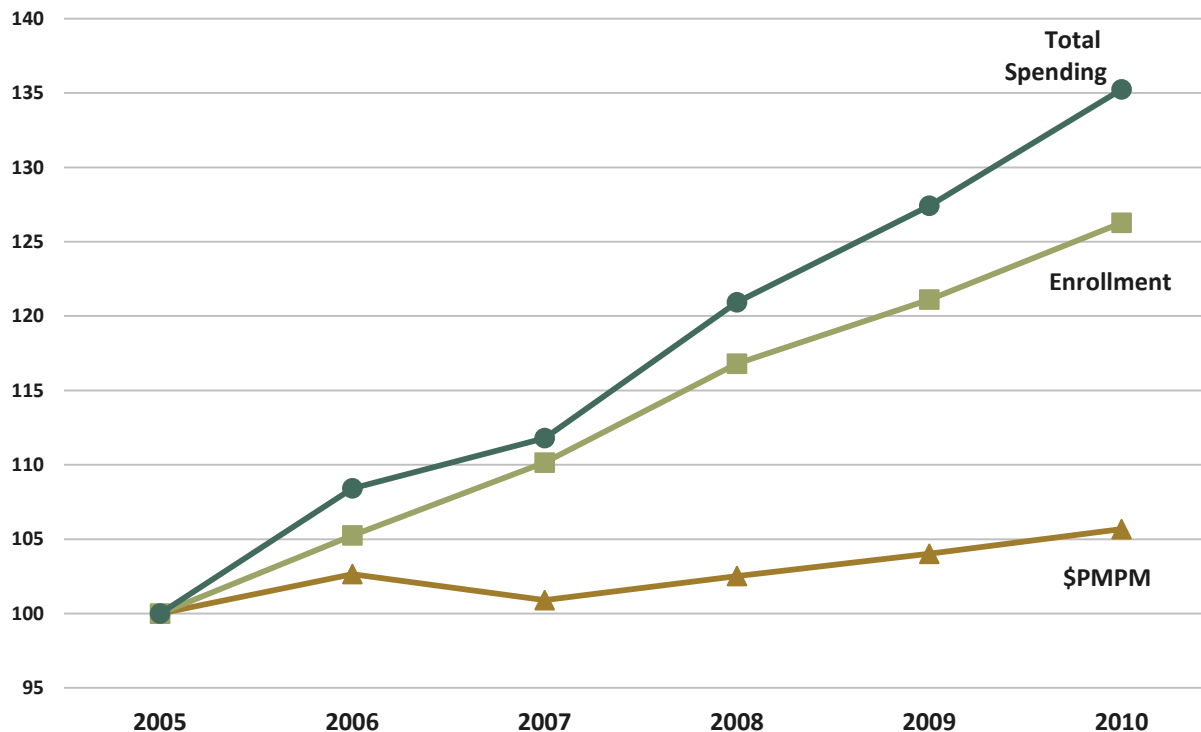
sources: Division of Health Care Finance and Policy, "Massachusetts Health System Data Reference," April 2009 (Hospitals – data from SFY 2007); Massachusetts Senior Care Association (Nursing Homes – data from CY 2008); Health Resources and Services Administration, Bureau of Primary Health Care (CHCs – data from Federal FY 2009); "Securing the Future: Report of the Massachusetts Long-Term Care Financing Advisory Committee," November 2010 (LTSS – data from Calendar Year 2005); Mass. DPH, Massachusetts Births 2010 (Pre-natal Care – data from Calendar Year 2005).

MassHealth represents a significant portion of health care providers' revenues. This is especially the case for nursing homes and community health centers, which receive at least half of their total patient revenues from MassHealth.

In addition, MassHealth covers more than a quarter of all pre-natal care, which is provided by a mix of providers.

ENROLLMENT HAS DRIVEN GROWTH IN MASSHEALTH SPENDING IN RECENT YEARS

GROWTH IN MASSHEALTH TOTAL SPENDING, ENROLLMENT AND PER MEMBER PER MONTH (PMPM) COSTS (YEAR 2005 = 100)

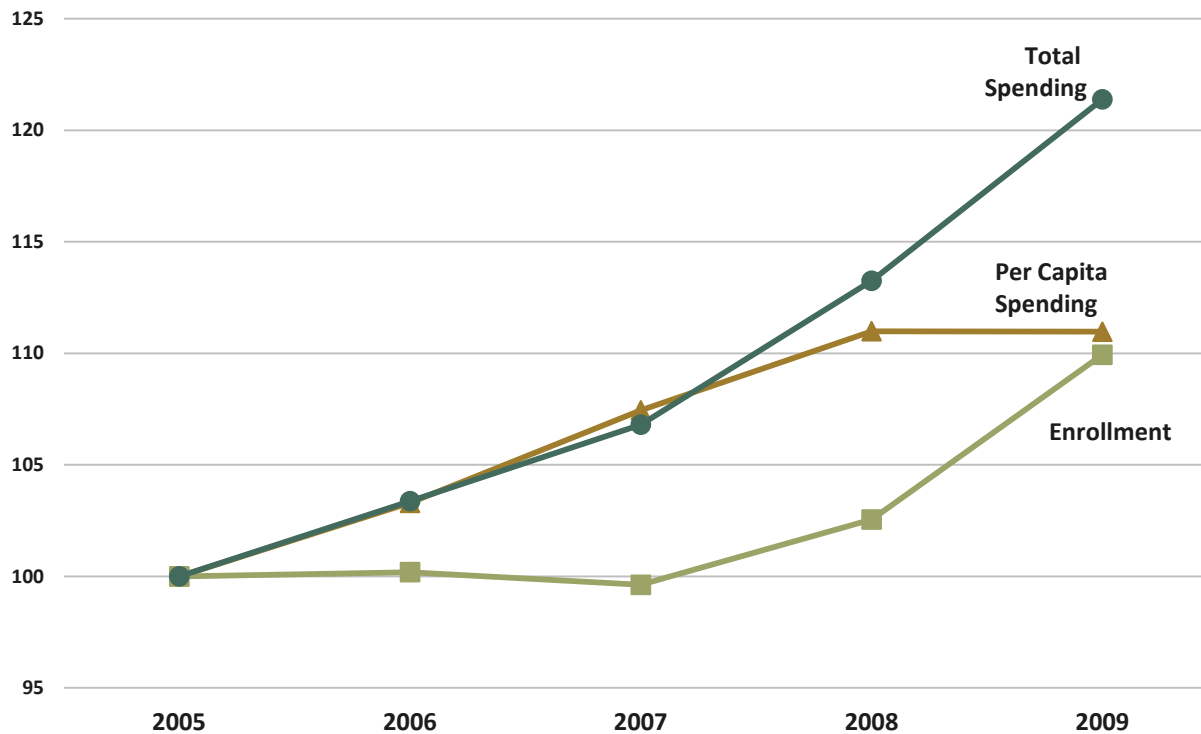


SOURCES: EOHHS (total spending and enrollment) and authors' calculations.

The increasing number of MassHealth members, rather than the amount spent for each member, has been the greatest driver of MassHealth spending over the last several years. Spending per member increased an average of just 1.1 percent per year from fiscal year 2005 through 2010, while enrollment grew an average of 5 percent per year over the same time period.

NATIONALLY, ENROLLMENT AND PER CAPITA SPENDING HAVE CONTRIBUTED EQUALLY TO MEDICAID SPENDING GROWTH IN RECENT YEARS

GROWTH IN MEDICAID TOTAL SPENDING, ENROLLMENT AND PER CAPITA SPENDING
(YEAR 2005 = 100)

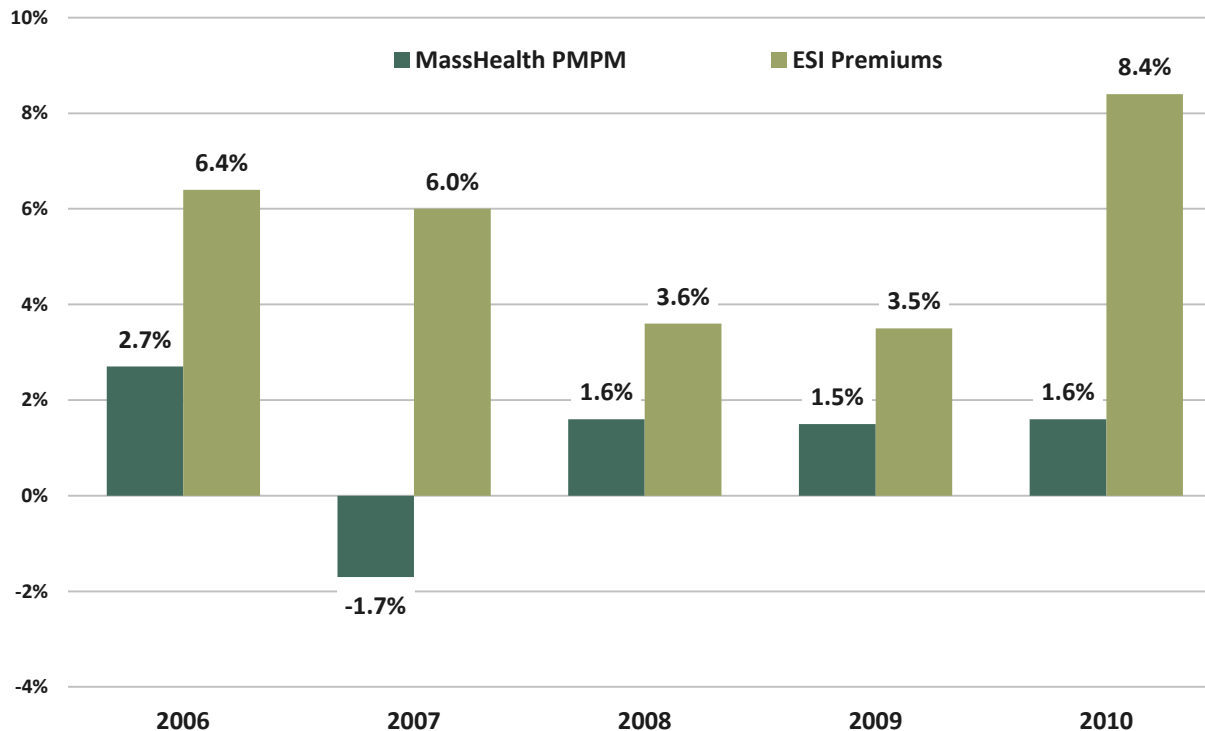


In the U.S., Medicaid enrollment remained flat from 2005 to 2007 while per capita monthly spending increased. These trends reversed with the onset of economic recession in 2007 and 2008.

SOURCES: Bureau of Labor Statistics, CPI Detailed Report, December 2010; Kaiser Commission on Medicaid and Uninsured, "Medicaid Enrollment: June 2010 Data Snapshot," February 2011; Holahan et al. "Medicaid Spending Growth over the Last Decade and the Great Recession, 2000-2009, Kaiser Commission on Medicaid and Uninsured, February 2011.

MASSHEALTH SPENDING PER CAPITA HAS GROWN MORE SLOWLY THAN PRIVATE HEALTH INSURANCE PREMIUMS

CHANGES IN MASSHEALTH PER MEMBER PER MONTH (PMPM) SPENDING AND PREMIUMS FOR EMPLOYER-SPONSORED INDIVIDUAL INSURANCE



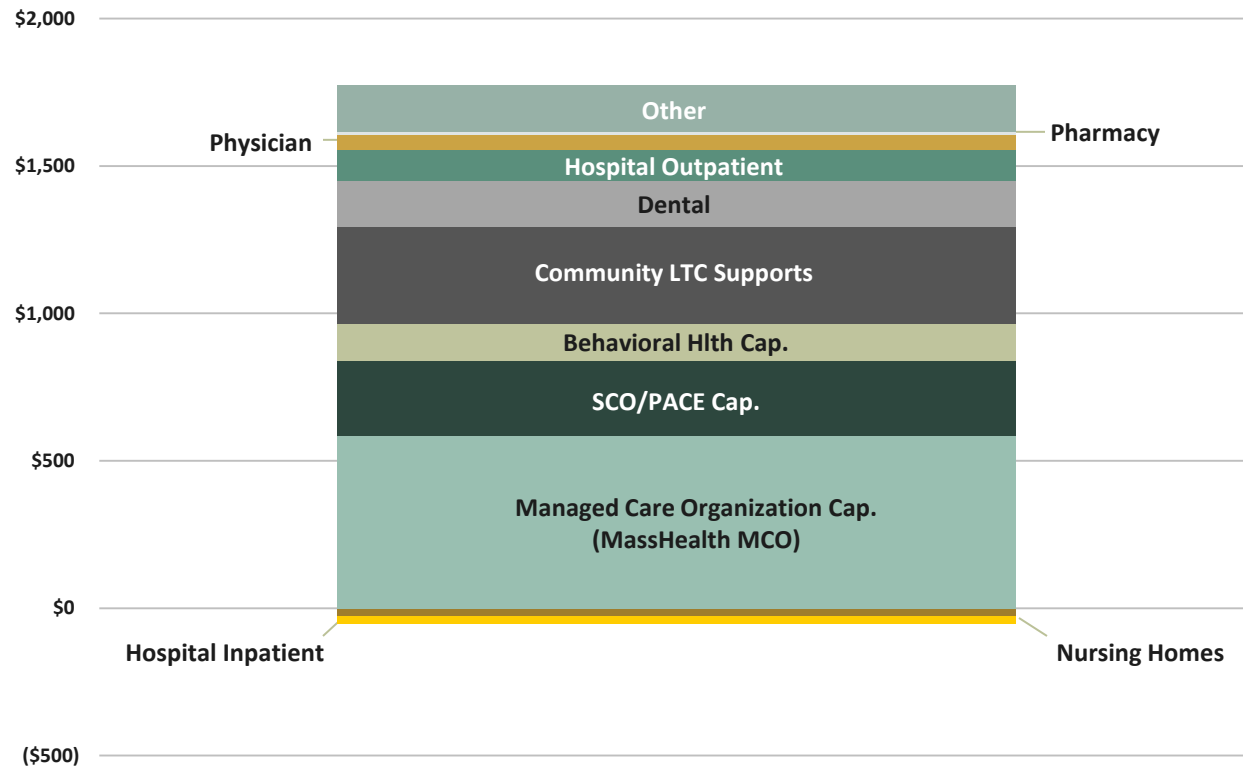
SOURCES: MassHealth; Division of Health Care Finance and Policy, Massachusetts Employer Survey 2010. The employer survey was conducted in 2005, 2007, 2009 and 2010. Annual percentage increases are derived by imputing premiums for 2006 and 2008 using the midpoint of the two-year interval. ESI premium trends are for small and large employers.

Spending per member for MassHealth has increased at a slower pace than premiums for employer-sponsored insurance (ESI). The decline in spending in 2007 was attributable in part to the introduction of the Medicare Prescription Drug (“Part D”) program, which removed a significant portion of MassHealth’s spending on pharmaceuticals.

Employers are able to contain premium growth by reducing benefits and increasing employee cost sharing (deductibles and co-payments). Federal rules give MassHealth very limited latitude with cost sharing, but it does have the ability to hold down provider rates, which can limit spending growth. Some providers and commercial plans argue that reductions in Medicaid provider rates result in their needing to shift costs to private payers to make up for Medicaid losses.

WHICH SERVICES CONTRIBUTED TO RECENT INCREASES IN MASSHEALTH SPENDING?

CHANGE IN MASSHEALTH SPENDING SFY07-10
(\$ MILLIONS)



NOTE: The largest components of "Other" are transportation (\$64 million), community health centers (\$28 million), early intervention (\$8 million) and mental health clinics (\$8 million).

SOURCE: MassHealth Budget Office.

From SFY 2007 through 2010, community-based long-term care grew rapidly, during a period when utilization of long-term care services has shifted away from facilities and toward services provided in the community.

Capitation fees to MassHealth MCOs were the largest part of the increase in spending. This was mainly due to increases in MassHealth MCO enrollment over this period. Data on which services MCOs spent capitation payments were not made available.

Capitation payments for the SCO and PACE programs for the elderly also grew substantially as result of increasing enrollment in those programs.

Pharmacy spending growth was barely a factor over these 4 years, and spending on nursing homes and hospital inpatient services declined slightly.

CONCLUSIONS

- MassHealth offers strong support to people who have no other source of health insurance and provides coverage for services and cost sharing not covered by other insurance (Medicare and employer sponsored insurance) for low-income residents.
- Spending in the program has grown, driven largely by increases in enrollment due in large part to the economic downturn. Per capita spending has only grown by an average of 1 percent per year in the past 5 years.
- MassHealth offers eligibility to a broader segment of its population than many other states' Medicaid programs. In particular, more people with disabilities qualify through the CommonHealth program, which offers benefits that are not generally available through employers or Medicare.
- MassHealth spending trends reflect policy toward providing more care in community-based settings and less in facilities or inpatient settings.