

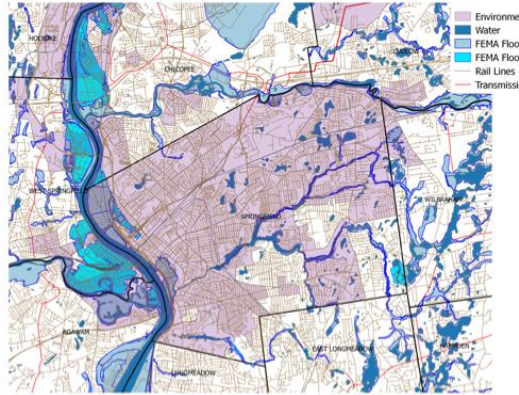
# Rethinking Health:

*Its Intersection with Healthcare, Housing, Transit, Jobs/Wealth Creation, Public Safety, Built Environment...*

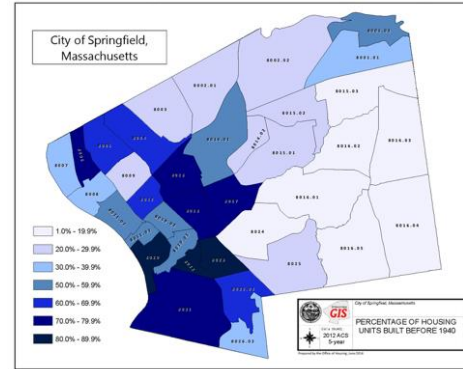
*Frank Robinson, PhD, Vice President, Public Health, Baystate Health*



# Environmental Justice Neighborhoods

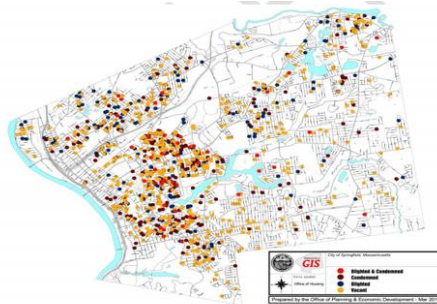


# Old Housing Stock in Springfield



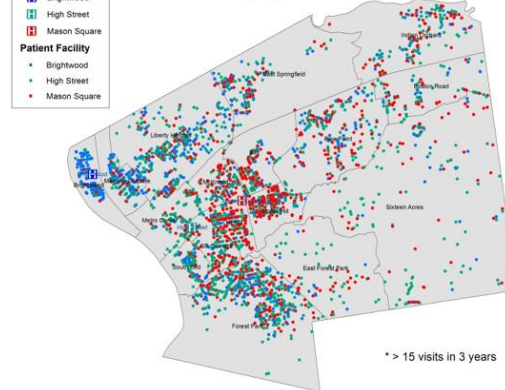
Percentage of Housing Units Built Before 1940

# Blighted, Condemned, and Vacant Properties - Spring 2013



1,162 properties listed as blighted, vacant and/or condemned.

# High Utilization\* Adult Patients by Facility



# **BUILD** *(Bold, Upstream, Integrated, Local, and Data-driven initiatives)*

## Health Challenge

- Healthy Hill Initiative is one of 18 inaugural awardees from across the nation.
- The Healthy Hill Initiative has been working to change the health landscape in Old Hill by focusing on “the dynamic intersection of two health determinants - public safety and access to physical activity.”

### **The Healthy Hill Initiative (HHI)**



#### *BUILD Sponsors:*

- *The Advisory Board Company*
- *De Beaumont Foundation*
- *Colorado Health Foundation*
- *Kresge Foundation*
- *RWJ Foundation*

# Healthy Hill Initiative – Named a “Healthcare Hero”

*BusinessWest and Healthcare News recognizes HHI as “Best Collaborative”*



Collective Action:



## Healthy Hill Initiative

Resident Health Advocates



## Healthy Hill Initiative – Youth Activities

Let's Play



## Healthy Hill Initiative

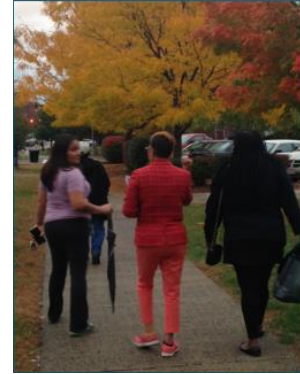
Healthy Living Workshops - Family Engagement



Healthy Living Workshops  
Let's Play  
Walking Groups

## Healthy Hill Initiative – Adult Fitness

Chair Aerobics and Walking Groups

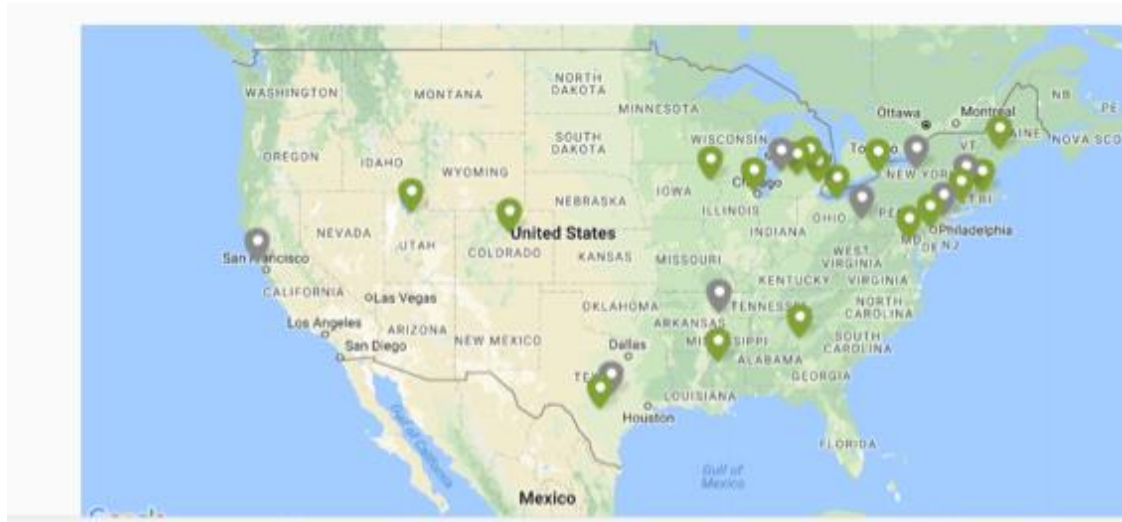


## Healthy Hill Initiative – Youth Activities

Let's Play

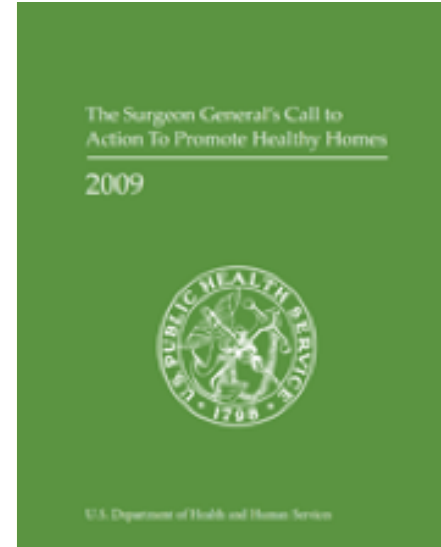


# Springfield's "Asthma Pays For Success Initiative"



# Evidence Base for Healthy Homes

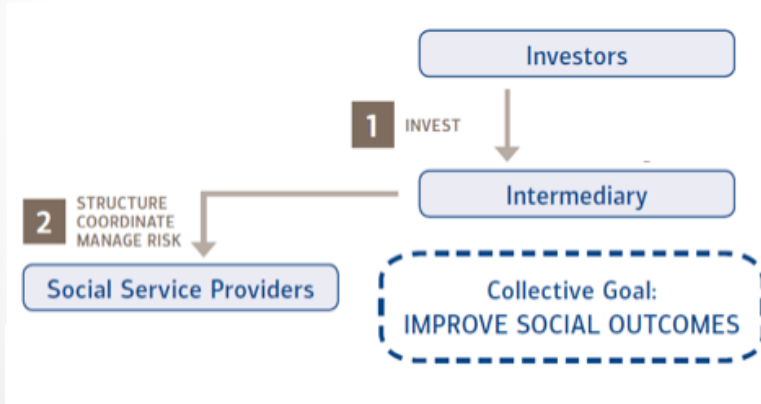
- NAEPP Guidelines:
  - 1) Assess disease severity;
  - 2) Medication;
  - 3) Patient education; and
  - 4) Environmental control**
- HHS's Task Force found **“strong evidence of effectiveness of in-home environmental interventions”** in improving asthma management and overall quality of life for asthmatics.
- Cost benefit studies show a return of **\$5 to \$14 per \$1**.




Surgeon General's Call to Action to Promote Healthy Homes (2009)

# Asthma “Pay for Success”

## A Cornerstone Agreement

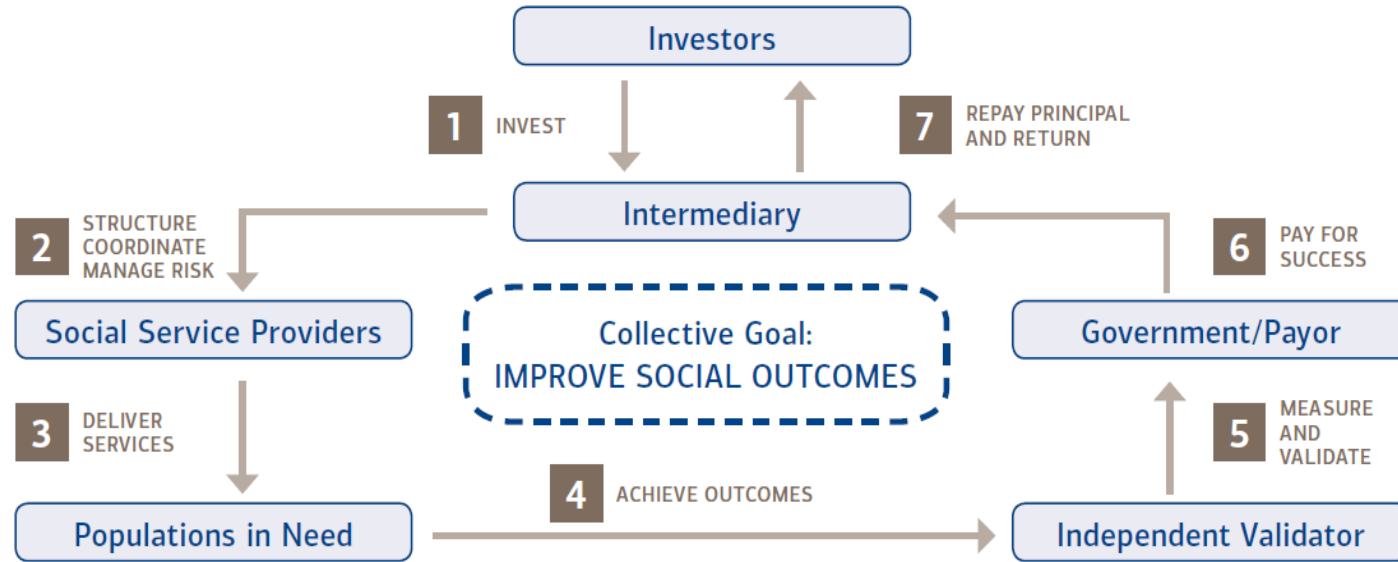


## Collective Action Partners

Insurer/Payer	 Health New England  Baystate Health
Asthma Home Visiting/CHW	 Baystate Medical Center Pulmonary Rehabilitation  Square One <small>This is Where It Starts</small>
Home Assessment & Repair	 Revitalize <small>Community Development Corporation</small> 
Leveraged Service-Weatherization	 SPRINGFIELD PARTNERS <small>for Community Action</small> <small>HELPING PEOPLE. CHANGING LIVES.</small>
Program and Data Management	 Partners for a Healthier Community, Inc.



# Asthma – Pay For Success



*If it works, investors are paid back*

# Pilot Phase: Home Visiting and Assessment



16 families enrolled so far,  
10 completed home assessments



Here are a couple of stories...

### Three year old child with asthma

He and mom shared a home with 14-15 other people, most were smokers. The CHW spoke to the family about tobacco smoke and asthma triggers. The family decided to move. The CHW noted an immediate improvement in the child's asthma health (stopped coughing).

A new obstacle. In their new rental home their electricity was shut off, preventing the child from using his much needed nebulizer treatment. The CHW helped the family obtain a medical protection plan and restore electricity, coordinating with their pediatrician and the utility.

The partnership with Baystate Pulmonary Rehab has missed doctor's appointments, and strengthen asthma medicine adherence. The Healthy Home Assessors will inspect the new home.

### 35 year old adult with asthma

She is an owner occupant. The CHW reported that her house has mold in the bathroom and possibly in the windowsills.

The client owned many houseplants and a fish tank with visible mold. After a few home visits, the client decided to empty and clean fish tank to remove visible mold. She was beginning to understand that mold was a trigger to her asthma.

The Healthy Home Assessors inspected the property and confirmed presence of dampness and mold growth in basement, as well as a leak under the kitchen sink. After addressing the initial problem wards, the client continued to improve her home, and removed cabinets, uncovering additional mold. The Healthy Home Assessors will return to the property to assess the situation.

# PFS Challenges

- 🌱 Lengthy feasibility and transaction structuring
- 🌱 Cost savings can be difficult to ascertain
- 🌱 Limited supply of appropriate interventions
- 🌱 High transaction costs
- 🌱 Bureaucracies and silos

