

2016

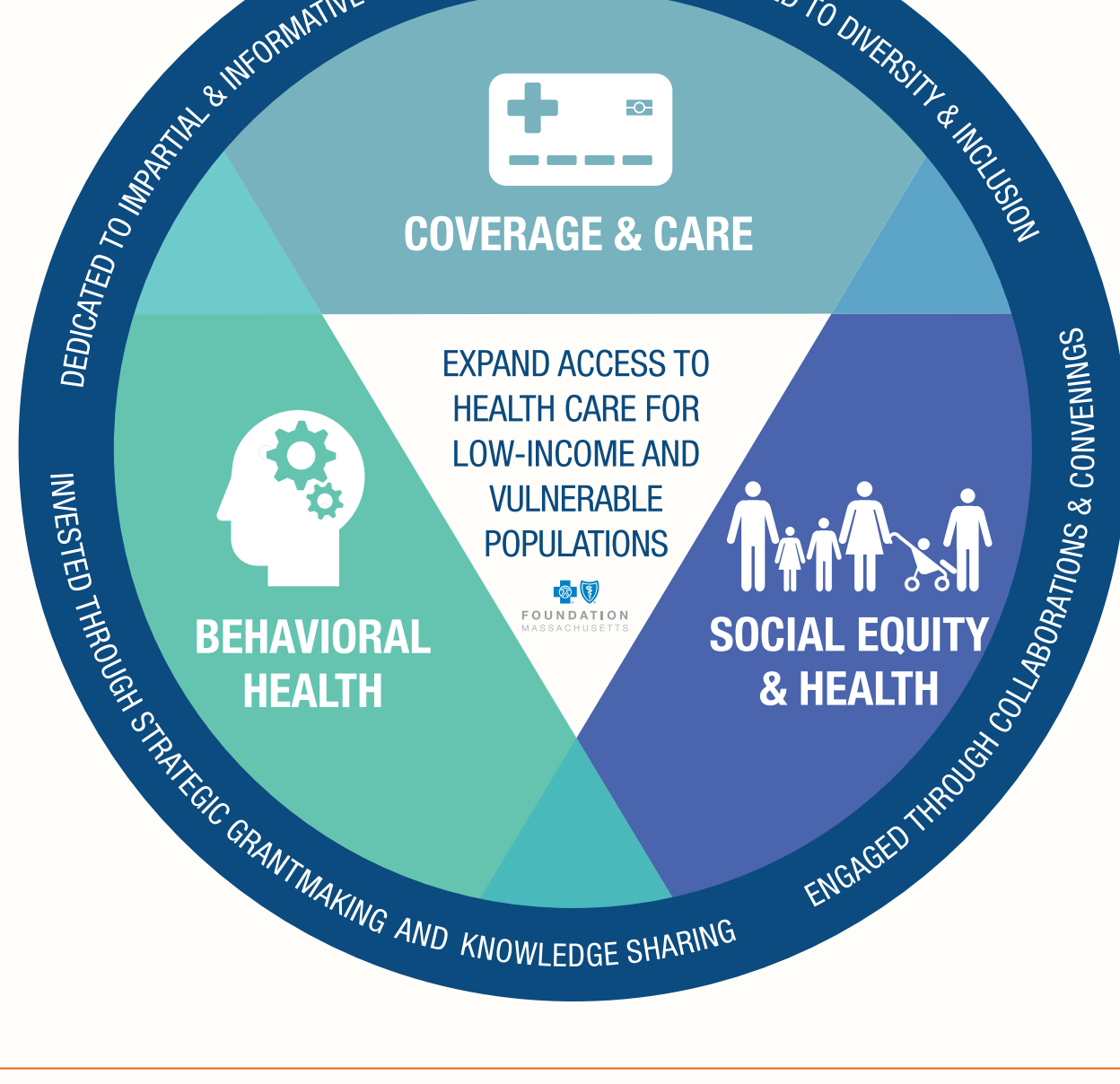


IMPACT

Everyone should have access to quality, affordable health care. Insurance coverage is necessary, but not sufficient to guarantee adequate access or improved health. **We must ensure that people have a basic understanding of how to use and keep their coverage** so they can access the full array of services they need, especially treatment for mental health and substance use disorders. And, **we need to continue to promote the idea that factors beyond medical care**, including the availability of quality food and housing, **are important to overall health.**

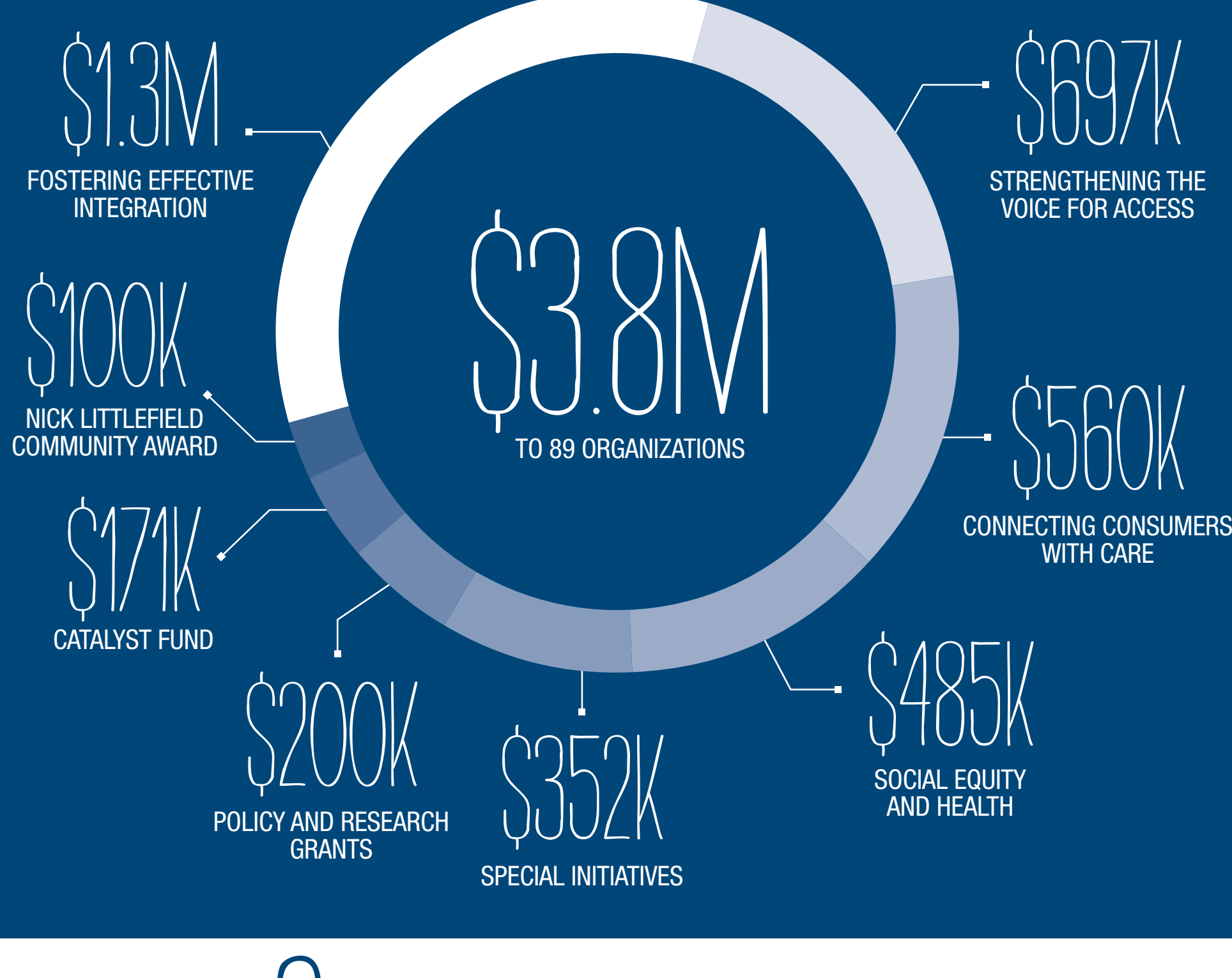
We are pleased to share highlights from our work in 2016, a year where we began to see unprecedented changes to the health policy landscape. **We continue to study and fund programs that promote the health care access of low-income and vulnerable people all across the Commonwealth**, allowing us to respond to the significant changes and challenges facing our community in the most meaningful way.

2017 AREAS OF FOCUS



GRANTMAKING

We organize our funding priorities into defined programs that are closely tied to our mission and areas of focus.



IMPACT

We fund programs and projects that promote sustainable improvements in health care access for low-income and vulnerable people. Through our grantmaking, we also identify trends that inform our policy work and bring to scale best practices and lessons learned. Current funding priorities include integrating behavioral health care and primary care, connecting low-income consumers with coverage and care, strengthening advocacy for health access, and examining the impact that social service spending can have on health outcomes and costs.

POLICY & RESEARCH

The focus of our policy and research projects is the development of effective policy solutions through impartial and timely research and analysis.



IMPACT

Our work centers on access and affordability as well as how barriers to care—whether regulatory, financial, or other—seriously impact people's health outcomes, especially among low-income and vulnerable populations. Working with nationally recognized researchers and academics, we focus on projects that identify effective solutions to local and national health care issues. Our publications are widely regarded as key resources for policy makers and those interested in Massachusetts health care issues.

THOUGHT LEADERSHIP

We bring awareness of important health care issues to people across the Commonwealth through collaborations, convenings, media and publications.



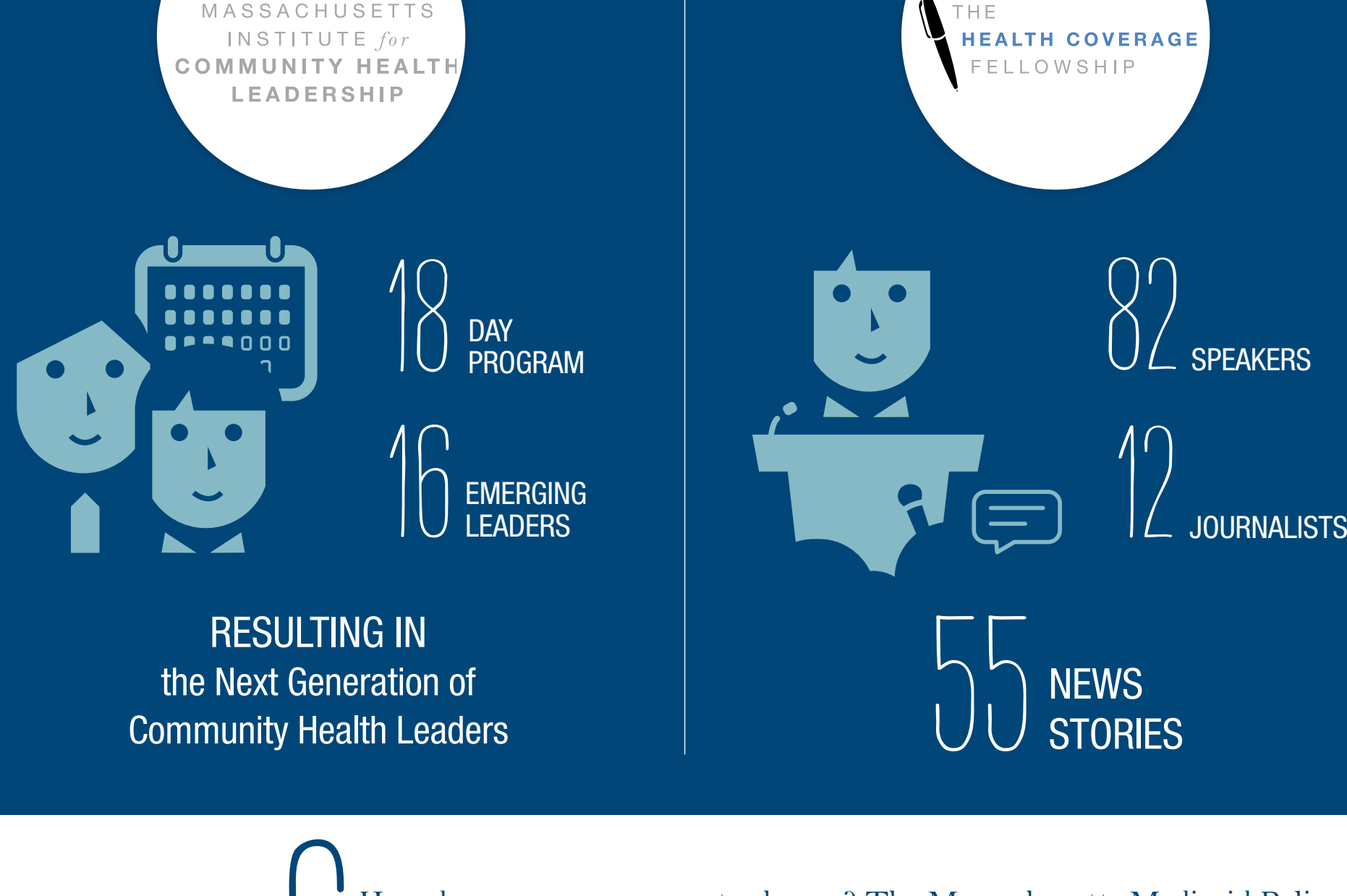
IMPACT

We are proud of our ongoing role as an impartial convener of thoughtful public discussion. The Foundation team is widely recognized for their expertise in many aspects of health care and are often called upon to serve on committees and task forces around the state. Foundation-sponsored conferences assemble stakeholders from government, advocacy, academia, and the provider community to discuss timely health care issues. Much of our work is covered by local and industry media and we also proactively seek opportunities to make health care policy more accessible through guest columns and presentations.

PROGRAMS

The Foundation runs three programs directly related to our mission of expanding access to health care.

The Massachusetts Medicaid Policy Institute (MMPI) is a **FULL-TIME POLICY PROGRAM** of the Foundation, devoted to **broadening the UNDERSTANDING** of the Massachusetts Medicaid program, **MassHealth**. **MMPI PROMOTES THE DISCUSSION OF EFFECTIVE POLICY SOLUTIONS** through **educational materials** and **in-depth policy papers**, and hosting **convenings & webinars** attracting a wide range of stakeholders.



IMPACT

How do our programs create change? The Massachusetts Medicaid Policy Institute produces independent, nonpartisan research and analysis about MassHealth, expanding understanding of this important coverage program and broadening the dialogue about ways to improve its effectiveness. The Massachusetts Institute for Community Health Leadership develops and nurtures emerging health care leaders. The Health Coverage Fellowship expands the capacity of the media to cover issues related to health reform and access to care.

2016



IMPACT