

2014



IMPACT

Health reform will not be complete until we make high-quality care *affordable* as well as *accessible*. For the past 14 years, we have been working toward meaningful change in the face of dynamic and sometimes challenging policy landscapes. But our ultimate goal is clear: to see improved access, better health outcomes, and lower costs for our most vulnerable residents. Here are some recent highlights.

2014-2016 AREAS OF FOCUS

COVERAGE & CARE

Coverage does not always equal care. We are committed to supporting programs that help low-income consumers obtain, keep, and use their insurance to access high-quality, affordable care. We conduct research and develop strategies to increase coverage for those most in need.



AFFORDABILITY

Although the Commonwealth leads the nation in health insurance coverage, consumers still struggle with the cost of health care. We continue to document that impact to help ensure that our most vulnerable residents can get and afford the care they need.

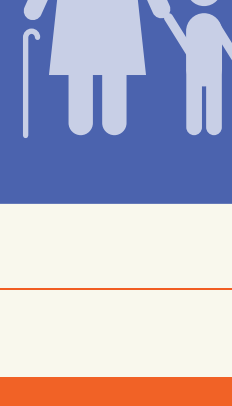


BEHAVIORAL HEALTH

Access to behavioral health is uneven, and consumers often have difficulty getting the right combination of care when they need it. We are exploring methods for expanding access and eliminating barriers to integrating behavioral and physical health care.



EXPAND ACCESS TO HEALTH CARE FOR LOW-INCOME & VULNERABLE POPULATIONS

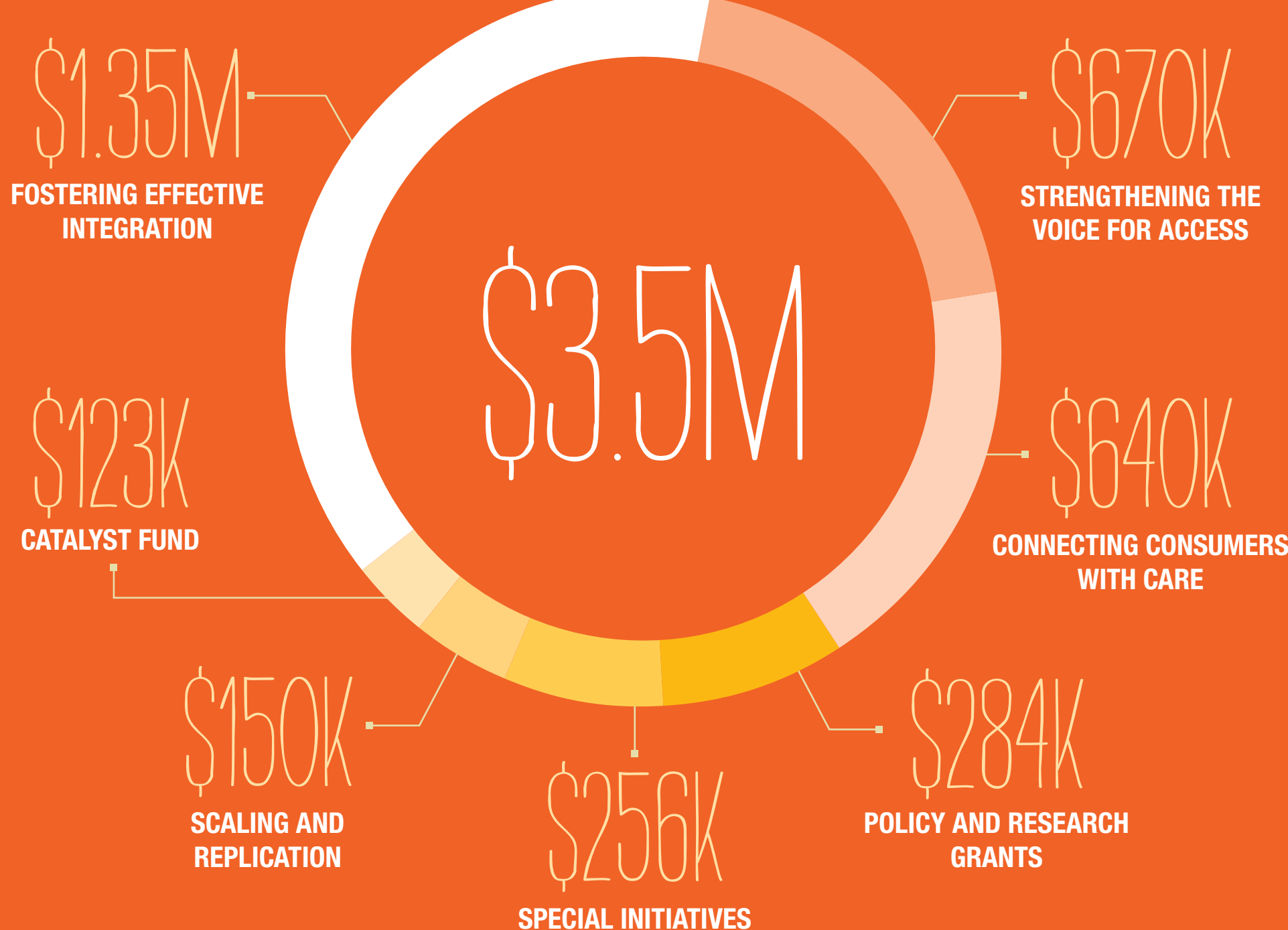


SOCIAL EQUITY

Social, environmental, and behavioral factors account for 60 percent of health outcomes, yet we continue to spend more on medical care than on social services. Through research and grantmaking, we are examining the impact that spending on social services can have on health outcomes.

GRANTMAKING

We organize our funding priorities into defined programs that are closely tied to our mission and areas of focus.



IMPACT

We fund programs and projects that promote sustainable improvements in health care access for low-income and vulnerable people. Through grantmaking, we also identify trends to inform our policy work and bring to scale best practices and lessons learned. Current funding priorities include integrating behavioral health care with primary care, connecting low-income patients with coverage and care, strengthening advocacy for health access, and building the capacity of community-based organizations.

POLICY & RESEARCH

The focus of our policy and research projects is the development of effective policy solutions through impartial and timely research and analysis.



IMPACT

Our work centers on access and affordability as well as how barriers to care – whether regulatory, financial, or other – seriously impact people's health outcomes, especially among low-income and vulnerable populations. We also engage stakeholders to identify priorities for the future direction of MassHealth (Massachusetts' Medicaid program) and have released a report with the findings. Our publications are widely regarded as key resources for policy makers and those interested in Massachusetts health care issues.

PROGRAMS

The Foundation runs three programs directly related to our mission of expanding access to health care.

The **Massachusetts Medicaid Policy Institute (MMPI)** is a **FULL-TIME POLICY PROGRAM** of the Foundation, devoted to **BROADENING THE UNDERSTANDING** of the Massachusetts Medicaid program, **MassHealth**. **MMPI PROMOTES THE DISCUSSION OF EFFECTIVE POLICY SOLUTIONS** through **EDUCATIONAL MATERIALS** and **in-depth policy papers**, and **hosting CONVENINGS & WEBINARS** attracting a **WIDE RANGE OF STAKEHOLDERS**.



18 DAY PROGRAM
19 EMERGING LEADERS

RESULTING IN THE NEXT GENERATION OF COMMUNITY HEALTH LEADERS



75 SPEAKERS
12 JOURNALISTS

RESULTING IN 29 NEWS STORIES

IMPACT

How do our programs create change? The Massachusetts Medicaid Policy Institute produces independent, nonpartisan research and analysis about MassHealth, expanding understanding of this important coverage program and broadening the dialogue about ways to improve its effectiveness. The Massachusetts Institute for Community Health Leadership develops and nurtures emerging health care leaders. The Health Coverage Fellowship expands the capacity of the media to cover issues related to health reform and access to care.

CONVENINGS

We stay connected to the community through collaborations and convenings.



6 CONVENINGS



7 LEARNING COMMUNITIES



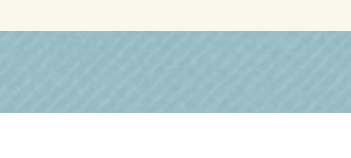
4 WEBINARS



5 ADVISORY MEETINGS

IMPACT

Foundation-sponsored conferences assemble stakeholders from government, advocacy, academia, and the provider community to discuss health care affordability and access, social equity and health, and the future of the MassHealth program. Our grantees participate in learning communities with peers to share best practices and address common challenges. Two webinars have provided participants with a comprehensive overview of MassHealth, and the Foundation has coordinated an advisory committee on the addiction epidemic and recovery services for the city of Boston.



The Blue Cross Blue Shield of Massachusetts Foundation and Blue Cross Blue Shield of Massachusetts are independent licensees of the Blue Cross and Blue Shield Association. ©2015 – BCBSMA Foundation. All rights reserved.